

EMBARGOED UNTIL 11.30 A.M. 29 FEBRUARY 1988

**LABOUR FORCE STATUS AND EDUCATIONAL
ATTAINMENT, AUSTRALIA**

FEBRUARY 1987

IAN CASTLES

Australian Statistician

© Commonwealth of Australia 1988

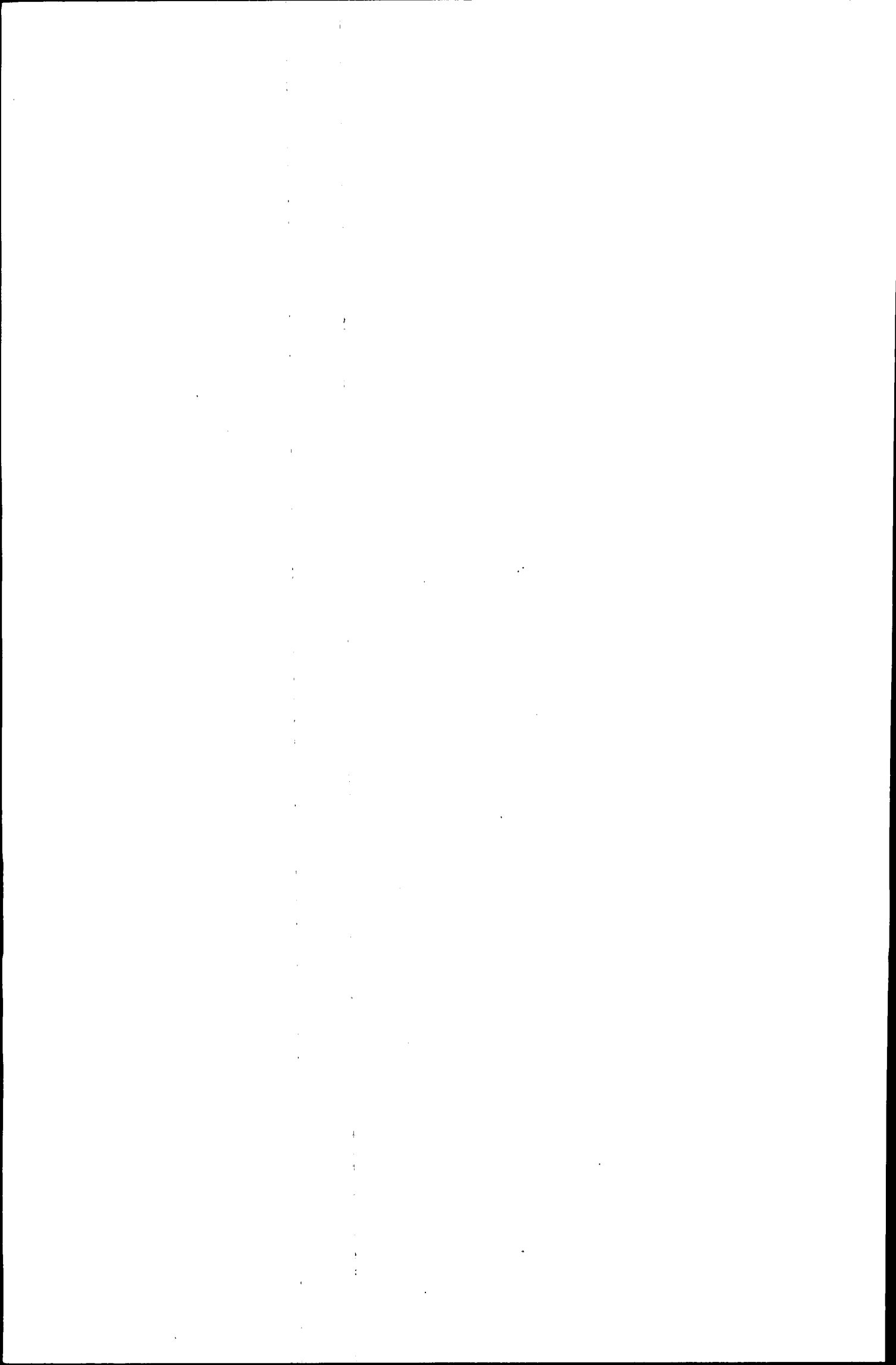
PHONE INQUIRIES • *about these statistics*—contact Ms Sandra Martyn on Canberra (062) 52 6503 or any ABS State office.
 • *about other statistics and ABS services*—contact **Information Services** on Canberra (062) 52 6627, 52 5402, 52 6007 or any ABS State office.

MAIL INQUIRIES • *write to Information Services, ABS, P.O. Box 10, Belconnen, A.C.T. 2616* or any ABS State office.

ELECTRONIC SERVICES • on VIATEL — key *656#. • on AUSSTATS — phone (062) 52 6017.
 • on TELESTATS — phone (062) 52 5404.

CONTENTS

<i>Table</i>	<i>Page</i>
Summary of Findings	1
Explanatory Notes	4
 All persons, February 1982 to February 1987	
Educational attainment and sex—	
1. Labour force status	6
2. Age	9
 Unemployed persons, February 1982 to February 1987	
3. Educational attainment, unemployment rate, average and median duration of unemployment, and sex	12
 All persons	
Educational attainment and sex—	
4. Labour force status	13
5. Family status	14
 Persons with post-school qualifications	
6. Main field of study, age, sex and labour force status	15
 Employed persons	
Educational attainment and sex—	
7. Industry	17
8. Occupation	18
9. Age	19
 Unemployed persons	
Educational attainment—	
10. Unemployment rate and unemployment/population ratio and age	20
11. Age and sex	21
12. Duration of current period of unemployment and sex	22
 Persons not in the labour force	
13. Educational attainment, main activity while out of the labour force and whether in the labour force in the last 12 months	23
Technical Note	24



SUMMARY OF FINDINGS

Note. The classification of post-school qualifications has been revised. Up to and including February 1986, the classification consisted of three categories: degree; trade, technical or other certificate; and other. In February 1987, the second category was split into two separate categories: trade qualification or apprenticeship; and certificate or diploma. The new breakdown has resulted in a drop in the estimates for the 'degree' and 'other' categories. Care should be taken in comparing detailed post-school qualifications in February 1987 with data from previous years. It should be noted that the total number of persons with post-school qualifications has not been affected and time-series comparisons, at this level, are still valid.

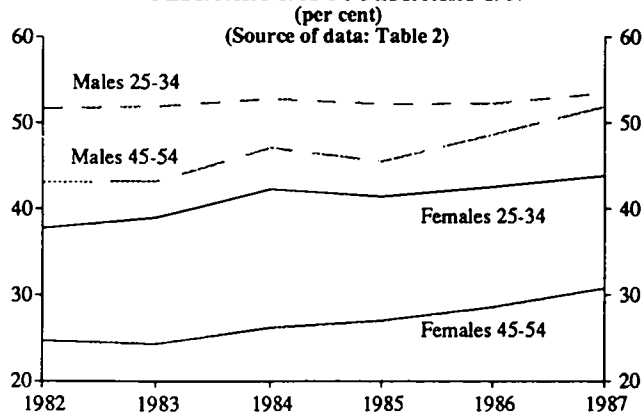
Educational Attainment, February 1982 — February 1987

The proportion of persons with post-school qualifications has risen from 32.0 per cent in 1982 to 36.6 per cent in 1987, an increase of almost one million people. Conversely, the proportion of persons without post-school qualifications has dropped from the 1982 estimate of 64.3 per cent to 58.9 per cent in February 1987. The proportion of persons still at school was 3.7 per cent in 1982 and 4.5 per cent in 1987.

While the overall proportion of males and females with post-school qualifications has risen by approximately the same amount over the past five years (4.7 percentage points for males and 4.5 percentage points for females) the increases differ considerably depending on age and sex.

For males in the 45 to 54 age group, the proportion with post-school qualifications has risen by 8.8 percentage points (from 43.1 per cent in 1982 to 51.9 per cent in 1987) while the corresponding estimate for females was 6.1 percentage points (from 24.7 per cent to 30.8 per cent). For the 25 to 34 age group however, females showed a much larger increase than males, recording a rise of 6.1 percentage points compared to only 1.8 percentage points for males.

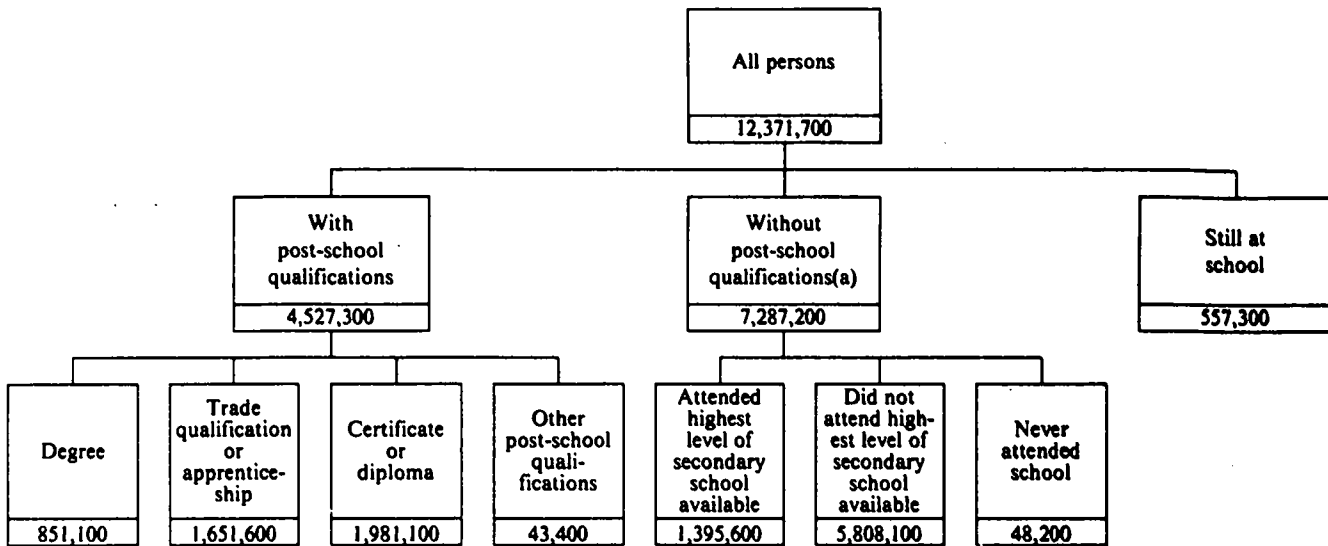
DIAGRAM 1. ALL PERSONS: PROPORTION OF PERSONS WITH POST-SCHOOL QUALIFICATIONS BY SELECTED AGES, FEBRUARY 1982 TO FEBRUARY 1987



Educational Attainment, February 1987

There were an estimated 12,371,700 persons aged 15 and over at February 1987. Of these, 4,527,300 had a post-school qualification (36.6 per cent), 7,287,200 had no post-school qualifications (58.9 per cent), and 557,300 (4.5 per cent) were still at school. For those with post-school qualifications, 851,100 (18.8 per cent) had a degree or higher qualification, 1,651,600 (36.5 per cent) had a trade qualification or apprenticeship, and 1,981,100 (43.8 per cent) had a certificate or diploma, while the remainder (43,400 or 1.0 per cent) had some other type of post-school qualification. Less than one in every five of those persons without post-school qualifications had attended the highest level of secondary school available (19.2 per cent).

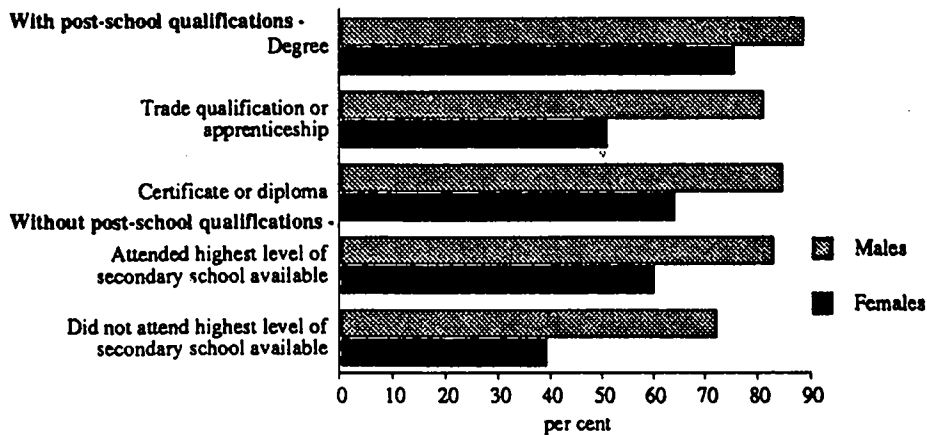
DIAGRAM 2. ALL PERSONS : EDUCATIONAL ATTAINMENT
(Source of Data : Table 4)



(a) Includes persons for whom secondary school qualifications could not be determined.

Labour force participation varied according to educational attainment. For males the labour force participation was high for those who had a degree (88.6 per cent) or those who did not attend the highest level of secondary schooling available and left at age 16 or 17 (87.7 per cent). Participation rates were particularly high for those males with a degree in the administration or medicine fields (92.8 per cent and 90.5 per cent respectively). The highest participation rate for females was recorded by those with degrees (75.6 per cent), and was particularly high for female graduates from the administration and law fields (83.0 per cent and 82.3 per cent).

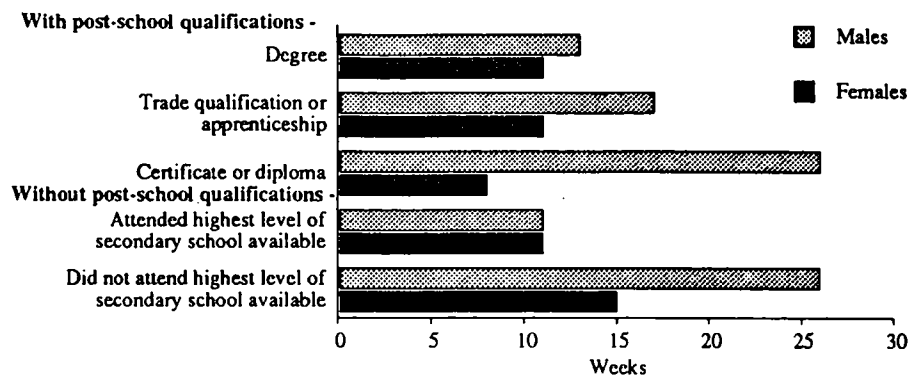
DIAGRAM 3. ALL PERSONS: EDUCATIONAL ATTAINMENT, PARTICIPATION RATES, FEBRUARY 1987
(Source of data: Table 4)



The unemployment rate at February 1987 was 9.1 per cent, representing 699,600 persons. About one in every four unemployed had post-school qualifications (25.8 per cent) while the remainder either had no post-school qualifications (68.2 per cent) or were still at school (6.0 per cent).

Both the unemployment rate and the duration of unemployment were generally lower for those with higher levels of educational attainment. For those with post-school qualifications the unemployment rate was 5.3 per cent and their median duration of unemployment was 12 weeks, compared with an unemployment rate of 11.6 per cent and a median duration of 18 weeks for those without post-school qualifications. This situation was similar for both males and females.

**DIAGRAM 4. UNEMPLOYED PERSONS: EDUCATIONAL ATTAINMENT AND
MEDIAN DURATION OF CURRENT PERIOD OF UNEMPLOYMENT,
FEBRUARY 1987**
(Source of data: Table 12)



Some 4,673,900 persons aged 15 and over were not in the labour force at February 1987. The main activity of these persons was kept house (54.7 per cent) or retired or voluntarily inactive (22.9 per cent).

Almost one in every four persons not in the labour force had post-school qualifications (23.7 per cent). Of these 1,106,900 persons, 673,400 (60.8 per cent) were female. The main field of study for 197,400 of these females was a secretarial diploma or certificate. This was the largest single group of qualified females not in the labour force. Similarly, there were 433,500 males with post-school qualifications who were not in the labour force, of whom 70,400 had qualifications in the metal trade and 69,000 had qualifications in the building trade. These were the two largest single groups of qualified males not in the labour force.

EXPLANATORY NOTES

Introduction

The monthly population survey (which is described in *The Labour Force, Australia* (6203.0)) comprises the monthly labour force survey and supplementary topics. This publication contains some results of a supplementary survey run in association with the February 1987 labour force survey conducted throughout Australia.

2. Of the respondents to the labour force survey, those who fell within the scope of the supplementary survey were asked additional questions. They were asked about their highest educational qualifications. For persons with post-school qualifications, the information sought included field of study, and for those who did not complete their schooling, it included the age at which they left school.

Scope

3. The scope of this supplementary survey was the same as that used for the labour force survey (described in full in *The Labour Force, Australia* (6203.0)) except that it excluded visitors to private dwellings, students boarding at school, some patients in hospitals and sanatoriums and inmates of gaols, reformatories etc.

4. In the tables, 'All Persons' refers to all persons within the scope of the survey.

Coverage

5. In the population survey, coverage rules are applied which aim to ensure that each person is associated with only one dwelling, and hence has only one chance of selection. See *The Labour Force, Australia* (6203.0) for more details.

Definitions

6. *Persons with a post-school qualification* are those who had left school and answered 'Yes' to the question: 'Since leaving school have you obtained a trade qualification, certificate, diploma, degree or any other qualification?'

7. *Classification of post-school qualifications.* Respondents indicated which of the following groups best described their highest qualification:

- (a) *Degree:* a bachelor degree (including honours), a graduate or post-graduate diploma, masters degree or a doctorate;
- (b) *Trade qualification or apprenticeship:* completion of an approved trade/technician apprenticeship in fitting and turning, hairdressing, plumbing, carpentry, etc;
- (c) *Certificate or diploma:* completion of an approved certificate or diploma in secretarial or business studies, administration, teaching, nursing, etc.;
- (d) *Other:* completion of other types of education, e.g. adult education, preparatory/bridging course or hobby course.

8. *Classification of field of study.* Respondents with a degree; trade qualification or apprenticeship; or a certificate or diploma (ie. (a), (b), or (c) in paragraph 7) indicated the main field of study for their highest qualification (see Table 6).

9. *Highest level of secondary school available* refers to the highest level of secondary schooling (or equivalent) offered by the education system at the time the respondent left school.

10. *Still at school.* Current school attendance is recorded only for persons aged fifteen to twenty years.

11. The *unemployment/population ratio* for any group is the number of unemployed persons expressed as a percentage of all persons in the same group.

12. Further definitions of labour force and demographic classifications appearing in this publication are given in *The Labour Force, Australia* (6203.0).

13. Unless otherwise stated, all characteristics referenced in this publication relate to the week before the interview.

Results of the survey

14. Due to differences in the method of estimation used in this supplementary survey and that used in the labour force survey, there are some small variations between estimates in this publication and those in the corresponding issue of *The Labour Force, Australia* (6203.0).

15. The estimates in this publication refer to information collected in the survey month and, due to seasonal factors, may not be representative of other months of the year.

16. A publication (6240.0) containing a summary of the results of the survey was released on 14 July 1987.

17. Results of similar surveys, conducted annually since February 1979, have been given in previous issues of this publication.

18. It is proposed that this survey will be conducted next in February 1988.

Unpublished tables

19. In some cases, the ABS can also make available information which is not published. This information may be made available in one or more of the following forms: microfiche, photocopy, data tape, computer printout, manually extracted tabulation. In general, a charge is made for providing unpublished information. Inquiries should be made to the officer whose name appears in the *Phone Inquiries* section at the front of this publication, or to Information Services in the nearest ABS Office.

Discontinuities in the series

20. Educational attainment of persons not in the labour force is not available for the February 1979, 1980 and 1981 surveys which only covered persons in the labour force.

21. For this survey, an expanded classification of post-school qualifications was used. As a result, a small number of persons previously categorised as 'Degree' or 'Other' may now be included in the categories 'Trade qualification or apprenticeship' or 'Certificate or diploma'. This expansion has also led to the introduction of a new field of study classification.

22. Estimates contained in this publication are based on a revised labour force questionnaire introduced in April 1986. The definition of employment was expanded, resulting in decreases in the estimates of unemployed persons and persons not in the labour force. Further information is contained in *The Labour Force, Australia* (6203.0) and in an information paper *Questionnaires Used in the Labour Force Survey* (6232.0).

23. Classification of occupation according to the Australian Standard Classification of Occupations (ASCO) 1986 was introduced in the August 1986 labour force survey, replacing the Classification and Classified List of Occupations (CCLO) used in previous surveys. The main difference between these classifications is that ASCO occupations are classified on the basis of the level and specialisation of skill required for the satisfactory performance of primary tasks. For a more detailed explanation of ASCO see the appendix to *The Labour Force, Australia, August 1986* (6203.0).

24. To provide a link between the two classifications, a matrix has been produced and is shown in Table 41 of *The Labour Force, Australia, August 1986* (6203.0). It shows the relationship between ASCO and CCLO at the broadest classification level (the Major Group). The estimates in the matrix are based on a sub-sample of respondents to the May 1986 labour force survey.

25. The family status classification in Table 5 varies from that shown in Table 5 of the February 1986 issue of this publication. Dependents are now identified rather than children aged 0 to 14. *Dependents* comprise all family members under 15 years of age; all family members aged 15 to 19 attending school; and all family members aged 15 to 24 who are full-time students at a tertiary or further educational institution.

Reliability of the estimates

26. Estimates in this publication are subject to sampling and non-sampling errors. For more information refer to the Technical Note.

Related publications

27. Other ABS publications which may be of interest include:

The Labour Force, Australia (6203.0) — issued monthly
Transition from Education to Work, Australia (6227.0) — issued annually

28. Current publications produced by the ABS are listed in the *Catalogue of Publications, Australia* (1101.0). The ABS also issues, on Tuesdays and Fridays, a *Publications Advice* (1105.0) which lists publications to be released in the next few days. The Catalogue and Publications Advice are available from any ABS office.

Symbols and other usages

- * subject to sampling variability too high for most practical uses. See the Technical Note.
- .. not applicable

29. Because estimates have been rounded, discrepancies may occur between sums of the component items and totals.

Electronic services

VIATEL. Key *656# for selected current economic, social and demographic statistics.

AUSSTATS. Thousands of up-to-date time series are available on this ABS on-line service through CSIRONET.

For further information phone the AUSSTATS Help Desk on (062) 52 6017.

TELESTATS. This service provides foreign trade statistics tailored to users' requirements.

Further information is available on (062) 52 5404.

TABLE 1. ALL PERSONS: LABOUR FORCE STATUS AND EDUCATIONAL ATTAINMENT,
FEBRUARY 1982 TO FEBRUARY 1987
(' 000)

	1982	1983	1984	1985	1986	1987(b)
MALES						
Employed	4,082.9	3,959.2	4,000.3	4,072.5	4,180.5	4,230.9
With post-school qualifications	1,789.1	1,789.6	1,881.2	1,894.1	1,991.6	2,091.9
Degree	363.7	386.9	425.1	435.6	456.7	456.8
Trade qualification or apprenticeship	1,399.2	1,368.6	1,424.9	1,410.0	1,490.4	1,129.8
Certificate or diploma						
Other	26.2	34.1	31.2	48.5	44.5	10.1
Without post-school qualifications(a)	2,259.9	2,144.1	2,081.3	2,142.7	2,147.4	2,086.1
Attended highest level of secondary school available	483.3	487.0	454.3	505.4	502.4	516.5
Did not attend highest level of secondary school available	1,768.6	1,651.3	1,618.9	1,631.7	1,639.5	1,556.5
Left at age —						
16 and over	570.5	542.4	544.5	573.4	590.8	596.3
15 and under	1,198.1	1,108.9	1,074.4	1,058.3	1,048.7	960.2
Still at school	33.9	25.5	37.8	35.7	41.5	52.9
Unemployed	251.7	440.8	435.8	390.4	367.9	395.4
With post-school qualifications	50.6	124.6	118.6	94.4	88.7	97.6
Degree	8.4	14.5	18.9	12.5	12.7	14.5
Trade qualification or apprenticeship	41.6	106.5	96.7	77.7	70.0	59.9
Certificate or diploma						
Other	*	*	*	*	6.0	*
Without post-school qualifications(a)	192.3	303.6	301.6	284.0	262.2	279.6
Attended highest level of secondary school available	35.2	59.0	60.6	60.3	54.0	61.0
Did not attend highest level of secondary school available	156.5	243.0	238.5	223.0	207.6	216.5
Left at age —						
16 and over	61.9	91.9	89.0	79.3	69.6	83.2
15 and under	94.6	151.2	149.5	143.7	138.0	133.3
Still at school	8.8	12.6	15.6	12.0	17.0	18.2
Labour force	4,334.7	4,400.0	4,436.2	4,462.9	4,548.5	4,626.3
With post-school qualifications	1,839.7	1,914.2	1,999.8	1,988.5	2,080.4	2,189.5
Degree	372.1	401.4	444.1	448.0	469.4	471.3
Trade qualification or apprenticeship	1,440.9	1,475.1	1,521.6	1,487.7	1,560.4	1,189.7
Certificate or diploma						
Other	26.7	37.7	34.1	52.8	50.6	11.3
Without post-school qualifications(a)	2,452.3	2,447.7	2,382.9	2,426.7	2,409.7	2,365.7
Attended highest level of secondary school available	518.5	546.1	514.9	565.7	556.3	577.5
Did not attend highest level of secondary school available	1,925.0	1,894.3	1,857.5	1,854.7	1,847.1	1,773.0
Left at age —						
16 and over	632.4	634.2	633.6	652.7	660.4	679.5
15 and under	1,292.7	1,260.1	1,223.9	1,202.0	1,186.7	1,093.5
Still at school	42.7	38.1	53.5	47.7	58.4	71.1
Not in labour force	1,128.1	1,187.7	1,237.5	1,309.5	1,409.2	1,466.0
With post-school qualifications	257.2	275.0	297.4	320.0	358.4	433.5
Degree	38.9	42.4	49.0	57.0	56.7	60.4
Trade qualification or apprenticeship	215.3	226.4	244.3	256.2	294.0	277.7
Certificate or diploma						
Other	*	6.2	*	6.8	7.7	*
Without post-school qualifications(a)	707.9	748.0	754.2	803.0	858.7	818.6
Attended highest level of secondary school available	96.2	109.3	103.7	107.3	134.9	119.2
Did not attend highest level of secondary school available	598.5	625.5	642.0	681.8	712.3	683.8
Left at age —						
16 and over	72.7	80.8	72.2	83.7	100.9	98.6
15 and under	525.8	544.7	569.8	598.1	611.4	585.1
Still at school	163.0	164.7	185.9	186.5	192.1	213.9
All males	5,462.8	5,587.7	5,673.7	5,772.4	5,957.7	6,092.3
With post-school qualifications	2,096.9	2,189.2	2,297.2	2,308.5	2,438.8	2,623.0
Degree	410.9	443.7	493.1	505.1	526.2	531.7
Trade qualification or apprenticeship	1,656.1	1,701.4	1,765.9	1,743.9	1,854.4	1,467.4
Certificate or diploma						
Other	29.8	44.0	38.2	59.5	58.2	13.2
Without post-school qualifications(a)	3,160.2	3,195.7	3,137.1	3,229.7	3,268.3	3,184.3
Attended highest level of secondary school available	614.7	655.4	618.6	673.1	691.3	696.8
Did not attend highest level of secondary school available	2,523.6	2,519.8	2,499.5	2,536.5	2,559.5	2,456.7
Left at age —						
16 and over	705.1	715.0	705.7	736.3	761.3	778.1
15 and under	1,818.5	1,804.7	1,793.7	1,800.1	1,798.2	1,678.6
Still at school	205.7	202.8	239.4	234.2	250.5	285.0

For footnotes see end of table.

TABLE 1. ALL PERSONS: LABOUR FORCE STATUS AND EDUCATIONAL ATTAINMENT,
FEBRUARY 1982 TO FEBRUARY 1987—continued
('000)

	1982	1983	1984	1985	1986	1987(b)
FEMALES						
Employed	2,314.6	2,295.8	2,365.7	2,503.7	2,646.8	2,767.3
With post-school qualifications	833.0	864.6	918.8	1,011.8	1,075.4	1,147.7
Degree	153.9	170.8	184.3	227.2	237.7	230.4
Trade qualification or apprenticeship	} 655.5	667.5	704.1	742.8	792.6	{ 88.1
Certificate or diploma						
Other	23.6	26.3	30.4	41.8	45.1	15.3
Without post-school qualifications(a)	1,440.4	1,393.4	1,399.2	1,442.3	1,512.4	1,553.5
Attended highest level of secondary school available	283.7	292.7	333.3	327.9	355.8	370.8
Did not attend highest level of secondary school available	1,151.9	1,096.8	1,061.5	1,113.3	1,152.8	1,168.6
Left at age—						
16 and over	410.0	389.6	387.0	426.8	468.0	468.4
15 and under	741.9	707.2	674.5	686.5	684.8	700.2
Still at school	41.2	37.8	47.7	49.6	59.0	66.1
Unemployed	232.7	305.9	301.9	283.2	295.3	304.2
With post-school qualifications	65.5	87.4	88.5	70.6	83.1	83.2
Degree	12.8	15.0	14.2	11.2	14.8	11.1
Trade qualification or apprenticeship	} 50.8	68.9	71.1	53.7	60.6	{ 5.7
Certificate or diploma						
Other	*	*	*	5.7	7.7	*
Without post-school qualifications(a)	155.4	206.0	198.0	192.8	193.0	197.3
Attended highest level of secondary school available	33.6	43.3	41.4	41.2	45.6	49.7
Did not attend highest level of secondary school available	121.4	161.5	156.1	151.7	145.9	145.9
Left at age—						
16 and over	47.1	66.7	62.6	65.9	64.1	63.0
15 and under	74.3	94.8	93.5	85.8	81.8	82.9
Still at school	11.8	12.5	15.4	19.8	19.2	23.7
Labour force	2,547.3	2,601.7	2,667.6	2,787.0	2,942.2	3,071.5
With post-school qualifications	898.5	952.0	1,007.2	1,082.4	1,158.5	1,230.9
Degree	166.7	185.7	198.5	238.4	252.5	241.6
Trade qualification or apprenticeship	} 706.3	736.5	775.2	796.5	853.3	{ 93.9
Certificate or diploma						
Other	25.5	29.8	33.5	47.5	52.7	17.3
Without post-school qualifications(a)	1,595.7	1,599.4	1,597.3	1,635.2	1,705.4	1,750.9
Attended highest level of secondary school available	317.2	336.1	374.7	369.1	401.5	420.5
Did not attend highest level of secondary school available	1,273.4	1,258.3	1,217.6	1,264.9	1,298.6	1,314.5
Left at age—						
16 and over	457.1	456.3	449.5	492.7	532.1	531.4
15 and under	816.3	802.0	768.1	772.2	766.5	783.1
Still at school	53.1	50.3	63.1	69.4	78.3	89.8
Not in labour force	3,018.0	3,073.9	3,147.1	3,136.7	3,201.2	3,207.9
With post-school qualifications	536.9	561.7	632.7	584.6	616.1	673.4
Degree	67.5	63.5	71.9	73.0	86.1	77.8
Trade qualification or apprenticeship	} 449.0	471.9	532.9	482.4	493.6	{ 90.3
Certificate or diploma						
Other	20.4	26.3	27.9	29.2	36.4	12.9
Without post-school qualifications(a)	2,329.8	2,351.9	2,350.5	2,386.6	2,416.2	2,352.0
Attended highest level of secondary school available	267.1	280.8	281.8	286.7	282.0	278.3
Did not attend highest level of secondary school available	2,036.4	2,043.2	2,043.6	2,070.0	2,108.8	2,036.9
Left at age—						
16 and over	397.3	385.0	417.5	436.4	431.1	426.0
15 and under	1,639.1	1,658.2	1,626.1	1,633.6	1,677.7	1,610.9
Still at school	151.3	160.3	163.9	165.5	168.9	182.5
All females	5,565.2	5,675.7	5,814.7	5,923.7	6,143.4	6,279.5
With post-school qualifications	1,435.4	1,513.7	1,640.0	1,667.0	1,774.6	1,904.3
Degree	234.2	249.2	270.4	311.4	338.6	319.4
Trade qualification or apprenticeship	} 1,155.3	1,208.3	1,308.1	1,278.8	1,346.9	{ 184.2
Certificate or diploma						
Other	45.9	56.2	61.4	76.8	89.1	30.3
Without post-school qualifications(a)	3,925.6	3,951.3	3,947.7	4,021.8	4,121.6	4,102.9
Attended highest level of secondary school available	584.3	616.9	656.5	655.7	683.5	698.9
Did not attend highest level of secondary school available	3,309.7	3,301.5	3,261.1	3,335.0	3,407.4	3,351.4
Left at age—						
16 and over	854.4	841.3	867.0	929.2	963.2	957.4
15 and under	2,455.2	2,460.2	2,394.1	2,405.8	2,444.2	2,394.0
Still at school	204.2	210.7	227.0	234.9	247.2	272.3

For footnotes see end of table.

TABLE 1. ALL PERSONS: LABOUR FORCE STATUS AND EDUCATIONAL ATTAINMENT,
FEBRUARY 1982 TO FEBRUARY 1987—continued
(‘000)

	1982	1983	1984	1985	1986	1987(b)
PERSONS						
<i>Employed</i>	6,397.5	6,255.0	6,366.0	6,576.3	6,827.4	6,998.2
With post-school qualifications	2,622.1	2,654.2	2,800.0	2,905.9	3,067.0	3,239.6
Degree	517.6	557.7	609.4	662.8	694.4	687.3
Trade qualification or apprenticeship Certificate or diploma	2,054.7	2,036.1	2,129.0	2,152.8	2,283.0	1,217.9
Other	49.8	60.5	61.6	90.3	89.6	25.4
Without post-school qualifications(a)	3,700.3	3,537.4	3,480.5	3,585.0	3,659.8	3,639.6
Attended highest level of secondary school available	767.0	779.7	787.6	833.3	858.2	887.4
Did not attend highest level of secondary school available	2,920.5	2,748.1	2,680.4	2,745.0	2,792.3	2,725.0
Left at age—						
16 and over	980.5	932.0	931.5	1,000.2	1,058.8	1,064.6
15 and under	1,940.0	1,816.1	1,748.9	1,744.8	1,733.5	1,660.4
Still at school	75.1	63.3	85.5	85.3	100.5	119.0
<i>Unemployed</i>	484.4	746.7	737.8	673.6	663.3	699.6
With post-school qualifications	116.1	212.0	207.1	165.0	171.8	180.8
Degree	21.2	29.5	33.1	23.7	27.5	25.6
Trade qualification or apprenticeship Certificate or diploma	92.4	175.4	167.8	131.4	130.6	65.7
Other	*	7.1	6.2	9.9	13.7	86.2
Without post-school qualifications(a)	347.7	509.6	499.6	476.8	455.2	476.9
Attended highest level of secondary school available	68.8	102.3	102.0	101.5	99.6	110.7
Did not attend highest level of secondary school available	277.9	404.5	394.6	374.7	353.5	362.4
Left at age—						
16 and over	109.0	158.6	151.6	145.2	133.7	146.2
15 and under	168.9	246.0	243.0	229.5	219.8	216.2
Still at school	20.6	25.1	31.0	31.8	36.2	41.9
<i>Labour force</i>	6,881.9	7,001.7	7,103.8	7,249.9	7,490.6	7,697.8
With post-school qualifications	2,738.2	2,866.2	3,007.0	3,070.9	3,238.9	3,420.4
Degree	538.8	587.1	642.6	686.4	721.9	712.9
Trade qualification or apprenticeship Certificate or diploma	2,147.2	2,211.6	2,296.8	2,284.2	2,413.7	1,283.6
Other	52.2	67.5	67.6	100.3	103.3	1,395.2
Without post-school qualifications(a)	4,048.0	4,047.1	3,980.2	4,061.9	4,115.1	4,116.5
Attended highest level of secondary school available	835.7	882.2	889.6	934.8	957.8	958.1
Did not attend highest level of secondary school available	3,198.4	3,152.6	3,075.0	3,119.6	3,145.7	3,087.5
Left at age—						
16 and over	1,089.5	1,090.5	1,083.1	1,145.4	1,192.5	1,210.9
15 and under	2,109.0	2,062.1	1,992.0	1,974.2	1,953.2	1,876.6
Still at school	95.8	88.4	116.6	117.1	136.7	160.9
<i>Not in labour force</i>	4,146.1	4,261.6	4,384.7	4,446.2	4,610.4	4,673.9
With post-school qualifications	794.1	836.7	930.1	904.6	974.5	1,106.9
Degree	106.4	105.9	120.9	130.0	142.8	138.2
Trade qualification or apprenticeship Certificate or diploma	664.3	698.3	777.2	738.6	787.6	368.0
Other	23.4	32.6	32.0	36.0	44.1	585.9
Without post-school qualifications(a)	3,037.7	3,099.9	3,104.7	3,189.6	3,274.9	3,170.6
Attended highest level of secondary school available	363.3	390.1	385.5	394.0	416.9	397.5
Did not attend highest level of secondary school available	2,634.9	2,668.7	2,685.6	2,751.8	2,821.1	2,720.6
Left at age—						
16 and over	470.0	465.8	489.7	520.1	532.0	524.6
15 and under	2,164.9	2,202.9	2,195.9	2,231.7	2,289.1	2,196.0
Still at school	314.3	325.0	349.8	352.0	361.0	396.4
All persons	11,028.0	11,263.4	11,488.4	11,696.1	12,101.1	12,371.7
With post-school qualifications	3,532.2	3,702.9	3,937.1	3,975.5	4,213.4	4,527.3
Degree	645.1	693.0	763.5	816.4	864.8	851.1
Trade qualification or apprenticeship Certificate or diploma	2,811.4	2,909.8	3,074.0	3,022.8	3,201.3	1,651.6
Other	75.7	100.2	99.6	136.3	147.3	1,981.1
Without post-school qualifications(a)	7,085.7	7,147.0	7,084.8	7,251.5	7,389.9	7,287.2
Attended highest level of secondary school available	1,199.0	1,272.3	1,275.1	1,328.8	1,374.8	1,395.6
Did not attend highest level of secondary school available	5,833.3	5,821.3	5,760.6	5,871.4	5,966.9	5,808.1
Left at age—						
16 and over	1,559.5	1,556.3	1,572.7	1,665.5	1,724.5	1,735.5
15 and under	4,273.7	4,264.9	4,187.8	4,205.9	4,242.4	4,072.6
Still at school	410.1	413.5	466.4	469.1	497.7	557.3

(a) Includes persons who never attended school and those for whom secondary school qualifications could not be determined. (b) Prior to February 1987 the data now published in the Educational Attainment categories 'Trade qualification or apprenticeship' and 'Certificate or diploma' was published as 'Trade, technical or other certificate'. See paragraph 21 of the Explanatory Notes.

TABLE 2. ALL PERSONS: EDUCATIONAL ATTAINMENT AND AGE,
FEBRUARY 1982 TO FEBRUARY 1987
(' 000)

	1982	1983	1984	1985	1986	1987(b)
MALES						
15-24	1,288.6	1,301.1	1,294.8	1,300.5	1,336.0	1,356.4
With post-school qualifications	251.2	275.1	270.8	269.1	282.6	260.7
Degree	33.7	41.7	41.0	41.8	34.0	44.8
Trade qualification or apprenticeship	} 212.8	223.0	220.8	216.1	233.8	{ 161.3
Certificate or diploma						
Other	4.8	10.4	9.0	11.3	14.8	* 52.1
Without post-school qualifications(a)	831.6	823.2	784.5	797.1	802.8	810.7
Attended highest level of secondary school available	270.1	278.2	250.5	278.6	294.6	301.0
Did not attend highest level of secondary school available	560.4	545.0	533.5	518.3	507.7	507.8
Still at school	205.7	202.8	239.5	234.2	250.6	285.0
25-34	1,184.4	1,206.3	1,246.8	1,258.5	1,283.6	1,308.0
With post-school qualifications	612.3	625.7	658.9	656.9	671.5	699.2
Degree	148.7	158.0	177.5	168.2	172.2	175.5
Trade qualification or apprenticeship	} 455.3	455.8	474.0	470.4	484.5	{ 367.3
Certificate or diploma						
Other	8.3	12.0	7.4	18.3	14.8	5.1 151.3
Without post-school qualifications(a)	572.0	580.5	587.9	601.7	612.1	608.7
Attended highest level of secondary school available	163.6	155.1	165.9	170.0	167.7	185.8
Did not attend highest level of secondary school available	407.5	423.8	419.7	429.7	442.3	419.0
35-44	962.7	1,043.6	1,016.2	1,083.2	1,128.1	1,169.8
With post-school qualifications	496.4	545.4	544.7	582.6	608.7	656.3
Degree	106.9	117.7	132.8	145.3	156.4	156.3
Trade qualification or apprenticeship	} 381.2	418.8	402.2	423.8	439.4	{ 328.9
Certificate or diploma						
Other	8.2	9.0	9.7	13.5	12.9	* 168.8
Without post-school qualifications(a)	466.3	498.2	471.5	500.6	519.4	513.5
Attended highest level of secondary school available	64.8	85.8	80.8	93.0	94.4	95.8
Did not attend highest level of secondary school available	398.8	409.7	388.0	403.9	423.4	412.5
45-54	772.2	752.5	800.2	779.4	794.3	814.6
With post-school qualifications	332.7	325.3	376.9	354.9	386.8	423.1
Degree	54.1	55.9	62.8	71.2	79.5	70.0
Trade qualification or apprenticeship	} 274.3	263.1	307.3	276.1	299.9	{ 251.6
Certificate or diploma						
Other	*	6.3	6.8	7.6	7.5	* 100.5
Without post-school qualifications(a)	439.5	427.2	423.3	424.6	407.4	391.5
Attended highest level of secondary school available	43.2	50.9	43.9	46.6	48.8	41.1
Did not attend highest level of secondary school available	392.2	371.2	374.8	374.3	354.8	345.0
55 and over	1,255.0	1,284.3	1,315.8	1,350.7	1,415.6	1,443.5
With post-school qualifications	404.2	417.6	445.8	445.0	489.1	583.7
Degree	67.5	70.5	78.9	78.7	84.1	85.1
Trade qualification or apprenticeship	} 332.5	340.8	361.6	357.5	396.7	{ 358.3
Certificate or diploma						
Other	*	6.3	5.2	8.9	8.3	* 138.1
Without post-school qualifications(a)	850.7	866.6	870.0	905.7	926.6	859.9
Attended highest level of secondary school available	72.9	85.3	77.6	85.0	85.8	73.2
Did not attend highest level of secondary school available	764.7	770.0	783.4	810.3	831.3	772.5
All males	5,462.8	5,587.7	5,673.7	5,772.4	5,957.7	6,092.3
With post-school qualifications	2,096.9	2,189.2	2,297.2	2,308.5	2,438.8	2,623.0
Degree	410.9	443.7	493.1	505.1	526.2	531.7
Trade qualification or apprenticeship	} 1,656.1	1,701.4	1,765.9	1,743.9	1,854.4	{ 1,467.4
Certificate or diploma						
Other	29.8	44.0	38.2	59.5	58.2	610.7 13.2
Without post-school qualifications(a)	3,160.2	3,195.7	3,137.1	3,229.7	3,268.3	3,184.3
Attended highest level of secondary school available	614.7	655.4	618.6	673.1	691.3	696.8
Did not attend highest level of secondary school available	2,523.6	2,519.8	2,499.5	2,536.5	2,559.5	2,456.7
Still at school	205.7	202.8	239.5	234.2	250.6	285.0

For footnotes see end of table.

TABLE 2. ALL PERSONS : EDUCATIONAL ATTAINMENT AND AGE,
FEBRUARY 1982 TO FEBRUARY 1987—continued
(' 000)

	1982	1983	1984	1985	1986	1987(b)
FEMALES						
15-24	1,250.2	1,262.3	1,284.7	1,286.6	1,305.6	1,322.9
With post-school qualifications	287.9	294.7	292.5	291.8	303.9	289.9
Degree	46.2	36.9	36.3	42.5	44.5	41.1
Trade qualification or apprenticeship	} 233.1	246.6	243.3	231.5	241.8	} 24.1
Certificate or diploma						
Other	8.5	11.1	13.0	17.8	17.6	5.0
Without post-school qualifications(a)	758.0	757.0	765.1	759.8	754.5	760.7
Attended highest level of secondary school available	232.1	246.0	252.3	257.0	274.2	288.8
Did not attend highest level of secondary school available	525.9	510.8	511.0	502.3	479.2	469.5
Still at school	204.3	210.7	227.0	234.9	247.2	272.3
25-34	1,196.0	1,218.1	1,248.3	1,263.3	1,281.7	1,308.5
With post-school qualifications	452.2	474.8	527.7	524.7	546.1	574.0
Degree	95.3	105.7	119.0	130.3	140.2	130.1
Trade qualification or apprenticeship	} 344.2	358.2	392.2	374.9	385.4	} 37.8
Certificate or diploma						
Other	12.7	10.9	16.5	19.6	20.5	8.8
Without post-school qualifications(a)	743.8	743.3	720.6	738.6	735.7	734.5
Attended highest level of secondary school available	118.6	132.5	135.5	145.1	153.9	158.9
Did not attend highest level of secondary school available	623.9	608.7	582.3	591.4	580.3	569.1
35-44	922.8	1,009.2	1,043.8	1,059.1	1,101.3	1,143.7
With post-school qualifications	303.7	336.0	378.3	388.5	416.0	450.8
Degree	48.5	60.1	65.4	75.9	83.2	85.2
Trade qualification or apprenticeship	} 244.0	260.6	300.9	293.4	310.1	} 42.9
Certificate or diploma						
Other	11.3	15.3	12.0	19.2	22.6	5.7
Without post-school qualifications(a)	619.1	673.2	665.5	670.5	685.3	692.9
Attended highest level of secondary school available	63.0	76.2	85.7	83.4	86.7	89.7
Did not attend highest level of secondary school available	551.2	593.7	576.1	584.9	595.2	594.7
45-54	736.1	715.2	753.9	749.4	761.9	781.2
With post-school qualifications	181.5	173.8	197.4	202.0	218.2	240.7
Degree	22.3	22.2	21.9	32.1	33.1	32.7
Trade qualification or apprenticeship	} 153.4	143.2	165.0	160.5	174.4	} 28.3
Certificate or diploma						
Other	5.9	8.4	10.5	9.4	10.7	176.0
Without post-school qualifications(a)	554.6	541.5	556.5	547.4	543.6	540.5
Attended highest level of secondary school available	54.1	50.0	59.7	52.2	51.1	50.1
Did not attend highest level of secondary school available	493.6	483.0	492.1	489.8	487.4	480.2
55 and over	1,460.2	1,470.9	1,484.1	1,565.3	1,692.9	1,723.1
With post-school qualifications	210.1	234.5	244.1	259.9	290.4	348.8
Degree	21.9	24.3	27.8	30.5	37.6	30.2
Trade qualification or apprenticeship	} 180.6	199.7	206.8	218.5	235.1	} 51.1
Certificate or diploma						
Other	7.6	10.5	9.4	10.8	17.8	7.1
Without post-school qualifications(a)	1,250.1	1,236.4	1,240.0	1,305.3	1,402.5	1,374.3
Attended highest level of secondary school available	116.6	112.2	123.4	118.0	117.7	111.3
Did not attend highest level of secondary school available	1,115.1	1,105.2	1,099.6	1,166.5	1,265.2	1,237.9
All females	5,565.2	5,675.7	5,814.7	5,923.7	6,143.4	6,279.5
With post-school qualifications	1,435.4	1,513.7	1,640.0	1,667.0	1,774.6	1,904.3
Degree	234.2	249.2	270.4	311.4	338.6	319.4
Trade qualification or apprenticeship	} 1,155.3	1,208.3	1,308.1	1,278.8	1,346.9	} 184.2
Certificate or diploma						
Other	45.9	56.2	61.4	76.8	89.1	30.3
Without post-school qualifications(a)	3,925.6	3,951.3	3,947.7	4,021.8	4,121.6	4,102.9
Attended highest level of secondary school available	584.3	616.9	656.5	655.7	683.5	698.9
Did not attend highest level of secondary school available	3,309.7	3,301.5	3,261.1	3,335.0	3,407.4	3,351.4
Still at school	204.3	210.7	227.0	234.9	247.2	272.3

For footnotes see end of table.

**TABLE 2. ALL PERSONS : EDUCATIONAL ATTAINMENT AND AGE,
FEBRUARY 1982 TO FEBRUARY 1987—continued**
('000)

	1982	1983	1984	1985	1986	1987(b)
PERSONS						
15-24	2,538.8	2,563.4	2,579.4	2,587.1	2,641.6	2,679.3
With post-school qualifications	539.1	569.7	563.4	561.0	586.5	550.6
Degree	79.9	78.6	77.3	84.3	78.5	86.0
Trade qualification or apprenticeship	445.9	469.6	464.1	447.6	475.6	185.4
Certificate or diploma						
Other	13.3	21.5	22.0	29.1	32.4	7.5
Without post-school qualifications(a)	1,589.6	1,580.1	1,549.6	1,557.0	1,557.2	1,571.4
Attended highest level of secondary school available	502.2	524.2	502.8	535.6	568.8	589.8
Did not attend highest level of secondary school available	1,086.3	1,055.8	1,044.5	1,020.6	986.9	977.3
Still at school	410.1	413.5	466.5	469.2	497.8	557.3
25-34	2,380.3	2,424.3	2,495.0	2,521.9	2,565.3	2,616.5
With post-school qualifications	1,064.5	1,100.6	1,186.6	1,181.6	1,217.6	1,273.2
Degree	244.0	263.6	296.5	298.5	312.4	305.6
Trade qualification or apprenticeship	799.5	814.0	866.1	845.2	870.0	405.2
Certificate or diploma						
Other	21.0	22.9	23.9	37.8	35.3	13.9
Without post-school qualifications(a)	1,315.9	1,323.8	1,308.5	1,340.3	1,347.7	1,343.2
Attended highest level of secondary school available	282.2	287.6	301.4	315.1	321.6	344.7
Did not attend highest level of secondary school available	1,031.3	1,032.6	1,002.0	1,021.1	1,022.6	988.1
35-44	1,885.5	2,052.8	2,060.0	2,142.3	2,229.4	2,313.5
With post-school qualifications	800.1	881.4	923.0	971.2	1,024.7	1,107.2
Degree	155.4	177.7	198.2	221.2	239.7	241.6
Trade qualification or apprenticeship	625.2	679.4	703.1	717.3	749.5	371.8
Certificate or diploma						
Other	19.5	24.3	21.7	32.7	35.5	8.0
Without post-school qualifications(a)	1,085.4	1,171.4	1,137.0	1,171.2	1,204.8	1,206.4
Attended highest level of secondary school available	127.8	162.1	166.5	176.4	181.1	185.5
Did not attend highest level of secondary school available	950.0	1,003.5	964.2	988.8	1,018.6	1,007.2
45-54	1,508.3	1,467.7	1,554.1	1,528.9	1,556.2	1,595.8
With post-school qualifications	514.2	499.1	574.3	556.9	605.1	663.8
Degree	76.4	78.1	84.7	103.3	112.6	102.7
Trade qualification or apprenticeship	427.6	406.3	472.2	436.6	474.4	279.9
Certificate or diploma						
Other	10.2	14.7	17.4	17.0	18.2	4.7
Without post-school qualifications(a)	994.0	968.6	979.8	972.0	951.1	932.0
Attended highest level of secondary school available	97.3	100.9	103.5	98.7	99.9	91.2
Did not attend highest level of secondary school available	885.8	854.3	866.9	864.0	842.2	825.2
55 and over	2,715.1	2,755.2	2,799.9	2,916.0	3,108.6	3,166.7
With post-school qualifications	614.3	652.1	689.8	704.9	779.5	932.5
Degree	89.4	94.8	106.7	109.2	121.7	115.3
Trade qualification or apprenticeship	513.2	540.5	568.5	576.0	631.8	409.4
Certificate or diploma						
Other	11.8	16.8	14.6	19.7	26.0	9.3
Without post-school qualifications(a)	2,100.8	2,103.0	2,110.0	2,211.0	2,329.0	2,234.2
Attended highest level of secondary school available	189.5	197.5	201.0	203.0	203.5	184.4
Did not attend highest level of secondary school available	1,879.8	1,875.2	1,883.0	1,976.8	2,096.6	2,010.3
All persons	11,028.0	11,263.4	11,488.4	11,696.1	12,101.1	12,371.7
With post-school qualifications	3,532.2	3,702.9	3,937.1	3,975.5	4,213.4	4,527.3
Degree	645.1	693.0	763.5	816.4	864.8	851.1
Trade qualification or apprenticeship	2,811.4	2,909.8	3,074.0	3,022.8	3,201.3	1,651.6
Certificate or diploma						
Other	75.7	100.2	99.6	136.3	147.3	43.4
Without post-school qualifications(a)	7,085.7	7,147.0	7,084.8	7,251.5	7,389.9	7,287.2
Attended highest level of secondary school available	1,199.0	1,272.3	1,275.1	1,328.8	1,374.8	1,395.6
Did not attend highest level of secondary school available	5,833.3	5,821.3	5,760.6	5,871.4	5,966.9	5,808.1
Still at school	410.1	413.5	466.5	469.2	497.8	557.3

(a) Includes persons who never attended school and those for whom secondary school qualifications could not be determined. (b) Prior to February 1987 the data now published in the Educational Attainment categories 'Trade qualification or apprenticeship' and 'Certificate or diploma' was published as 'Trade, technical or other certificate'. See paragraph 21 of the Explanatory Notes.

TABLE 3. UNEMPLOYED PERSONS : EDUCATIONAL ATTAINMENT, UNEMPLOYMENT RATE, AVERAGE AND MEDIAN DURATION OF UNEMPLOYMENT, FEBRUARY 1982 TO FEBRUARY 1987

	Educational attainment							
	With post-school qualifications			Without post-school qualifications				
	Degree	Trade qualification or apprenticeship	Certificate or diploma	Total (a)	Attended highest level of secondary school available	Did not attend highest level of secondary school available	Total (b)	Total (c)
MALES								
<i>Unemployment rate—</i>								
1982	2.3	2.9		2.7	6.8	8.1	7.8	5.8
1983	3.6	7.2		6.5	10.8	12.8	12.4	10.0
1984	4.3	6.4		5.9	11.8	12.8	12.7	9.8
1985	2.8	5.2		4.7	10.7	12.0	11.7	8.7
1986	2.7	4.5		4.3	9.7	11.2	10.9	8.1
1987(d)	3.1	5.0	4.2	4.5	10.6	12.2	11.8	8.5
<i>Average duration—</i>								
1982	20.6	31.0		29.0	22.3	37.5	34.9	32.9
1983	20.2	23.3		23.4	24.8	37.7	35.2	31.2
1984	34.7	35.3		35.3	37.5	54.4	51.2	45.6
1985	30.6	42.9		40.3	32.7	63.5	57.4	51.9
1986	36.6	48.7		47.2	35.6	65.2	59.3	54.3
1987(d)	50.0	56.5	47.2	53.2	35.6	66.7	60.5	56.7
<i>Median duration—</i>								
1982	8	11		11	10	14	13	12
1983	11	12		12	12	19	17	14
1984	13	21		19	15	39	32	26
1985	12	15		14	12	29	26	22
1986	11	12		12	10	27	24	17
1987(d)	13	17	26	17	11	26	24	20
FEMALES								
<i>Unemployment rate—</i>								
1982	7.7	7.2		7.3	10.6	9.5	9.7	9.1
1983	8.0	9.4		9.2	12.9	12.9	12.9	11.8
1984	7.1	9.2		8.8	11.0	12.8	12.4	11.3
1985	4.7	6.7		6.5	11.2	12.0	11.8	10.2
1986	5.8	7.1		7.2	11.4	11.2	11.3	10.0
1987(d)	4.6	6.1	7.3	6.8	11.8	11.1	11.3	9.9
<i>Average duration—</i>								
1982	12.8	20.4		19.4	20.1	31.8	29.2	25.6
1983	23.6	22.4		23.3	24.1	36.5	33.8	30.5
1984	11.7	26.6		25.0	32.9	45.9	43.3	36.4
1985	23.0	27.4		29.4	23.7	42.5	38.5	34.6
1986	12.1	25.8		23.8	21.6	34.5	31.6	28.3
1987(d)	19.9	33.2	23.2	23.2	25.6	44.7	39.8	33.2
<i>Median duration—</i>								
1982	8	8		8	8	11	10	9
1983	9	9		9	10	14	13	12
1984	8	9		9	12	18	16	13
1985	5	8		9	10	19	14	12
1986	5	7		7	8	11	10	9
1987(d)	11	11	8	8	11	16	13	10
PERSONS								
<i>Unemployment rate—</i>								
1982	3.9	4.3		4.2	8.2	8.7	8.6	7.0
1983	5.0	7.9		7.4	11.6	12.8	12.6	10.7
1984	5.2	7.3		6.9	11.5	12.8	12.6	10.4
1985	3.4	5.8		5.4	10.9	12.0	11.7	9.3
1986	3.8	5.4		5.3	10.4	11.2	11.1	8.9
1987(d)	3.6	5.1	6.2	5.3	11.1	11.7	11.6	9.1
<i>Average duration—</i>								
1982	15.9	25.2		23.6	21.2	35.0	32.4	29.4
1983	22.0	23.0		23.4	24.5	37.2	34.6	30.9
1984	24.9	31.6		30.9	35.6	51.1	48.1	41.9
1985	27.0	36.6		35.7	29.0	55.0	49.7	44.6
1986	23.4	38.0		35.9	29.2	52.5	47.5	42.7
1987(d)	36.9	54.5	29.3	39.4	31.1	57.9	51.9	46.5
<i>Median duration—</i>								
1982	8	9		9	9	12	11	10
1983	9	10		11	11	17	16	13
1984	10	15		13	13	28	26	19
1985	9	13		12	10	26	20	16
1986	7	11		10	9	19	15	12
1987(d)	11	15	10	12	11	24	18	14

(a) Includes persons with other post-school qualifications. (b) Includes persons who never attended school and those for whom secondary school qualifications could not be determined. (c) Includes persons still at school. (d) Prior to February 1987 the data now published in the Educational Attainment categories 'Trade qualification or apprenticeship' and 'Certificate or diploma' was published as 'Trade, technical or other certificate'. See paragraph 21 of the Explanatory Notes.

TABLE 4. ALL PERSONS : EDUCATIONAL ATTAINMENT AND LABOUR FORCE STATUS, FEBRUARY 1987

Educational attainment	Employed			Unem- ployed	Labour force	Not in labour force	Total	Partic- ipation rate	Unem- ployment rate
	Full-time	Part-time	Total						
- '000 -									
- per cent -									
MALES									
With post-school qualifications	2,006.1	85.8	2,091.9	97.6	2,189.5	433.5	2,623.0	83.5	4.5
Degree	436.7	20.1	456.8	14.5	471.3	60.4	531.7	88.6	3.1
Trade qualification or apprenticeship	1,089.5	40.3	1,129.8	59.9	1,189.7	277.7	1,467.4	81.1	5.0
Certificate or diploma	470.9	24.3	495.2	21.9	517.1	93.6	610.7	84.7	4.2
Other	9.0	*	10.1	*	11.3	*	13.2	85.9	*
Without post-school qualifications (a)	1,951.3	134.8	2,086.1	279.6	2,365.7	818.6	3,184.3	74.3	11.8
Attended highest level of secondary school available	462.0	54.5	516.5	61.0	577.5	119.2	696.8	82.9	10.6
Did not attend highest level of secondary school available	1,476.9	79.6	1,556.5	216.5	1,773.0	683.8	2,456.7	72.2	12.2
Left at age -									
18 and over	29.9	*	32.2	5.6	37.8	8.5	46.3	81.7	14.8
16 or 17	533.9	30.2	564.0	77.6	641.7	90.2	731.9	87.7	12.1
14 or 15	774.1	37.9	812.0	117.3	929.3	407.4	1,336.7	69.5	12.6
13 and under	139.0	9.2	148.2	16.0	164.2	177.7	341.9	48.0	9.7
Never attended school	*	*	*	*	5.6	12.6	18.2	30.8	*
Still at school	*	50.8	52.9	18.2	71.1	213.9	285.0	25.0	25.6
Total	3,959.5	271.4	4,230.9	395.4	4,626.3	1,466.0	6,092.3	75.9	8.5
FEMALES									
With post-school qualifications	767.5	380.2	1,147.7	83.2	1,230.9	673.4	1,904.3	64.6	6.8
Degree	178.4	52.0	230.4	11.1	241.6	77.8	319.4	75.6	4.6
Trade qualification or apprenticeship	53.5	34.6	88.1	5.7	93.9	90.3	184.2	51.0	6.1
Certificate or diploma	526.7	287.1	813.8	64.3	878.1	492.3	1,370.4	64.1	7.3
Other	8.9	6.5	15.3	*	17.3	12.9	30.3	57.3	*
Without post-school qualifications (a)	948.6	604.9	1,553.5	197.3	1,750.9	2,352.0	4,102.9	42.7	11.3
Attended highest level of secondary school available	249.0	121.8	370.8	49.7	420.5	278.3	698.9	60.2	11.8
Did not attend highest level of secondary school available	689.9	478.7	1,168.6	145.9	1,314.5	2,036.9	3,351.4	39.2	11.1
Left at age -									
18 and over	10.9	*	14.3	*	17.7	21.8	39.5	44.8	*
16 or 17	296.0	158.0	454.0	59.6	513.7	404.2	917.8	56.0	11.6
14 or 15	337.4	289.6	627.0	75.0	701.9	1,265.5	1,967.5	35.7	10.7
13 and under	45.6	27.6	73.2	8.0	81.2	345.3	426.5	19.0	9.8
Never attended school	*	*	*	*	*	25.8	30.0	*	*
Still at school	*	65.8	66.1	23.7	89.8	182.5	272.3	33.0	26.4
Total	1,716.4	1,050.9	2,767.3	304.2	3,071.5	3,207.9	6,279.5	48.9	9.9
PERSONS									
With post-school qualifications	2,773.5	466.0	3,239.6	180.8	3,420.4	1,106.9	4,527.3	75.6	5.3
Degree	615.1	72.1	687.3	25.6	712.9	138.2	851.1	83.8	3.6
Trade qualification or apprenticeship	1,143.0	75.0	1,217.9	65.7	1,283.6	368.0	1,651.6	77.7	5.1
Certificate or diploma	997.6	311.4	1,309.0	86.2	1,395.2	585.9	1,981.1	70.4	6.2
Other	17.8	7.6	25.4	*	28.7	14.8	43.4	66.0	*
Without post-school qualifications (a)	2,900.0	739.7	3,639.6	476.9	4,116.5	3,170.6	7,287.2	56.5	11.6
Attended highest level of secondary school available	711.1	176.3	887.4	110.7	998.1	397.5	1,395.6	71.5	11.1
Did not attend highest level of secondary school available	2,166.8	558.3	2,725.0	362.4	3,087.5	2,720.6	5,808.1	53.2	11.7
Left at age -									
18 and over	40.8	5.7	46.6	9.0	55.5	30.3	85.8	64.7	16.2
16 or 17	829.9	188.2	1,018.1	137.3	1,155.3	494.3	1,649.7	70.0	11.9
14 or 15	1,111.5	327.5	1,439.0	192.3	1,631.3	1,672.9	3,304.2	49.4	11.8
13 and under	184.6	36.8	221.4	23.9	245.3	523.1	768.4	31.9	9.7
Never attended school	6.3	*	7.8	*	9.8	38.4	48.2	20.4	*
Still at school	*	116.6	119.0	41.9	160.9	396.4	557.3	28.9	26.0
Total	5,675.9	1,322.3	6,998.2	699.6	7,697.8	4,673.9	12,371.7	62.2	9.1

(a) Includes persons for whom secondary school qualifications could not be determined.

TABLE 5. ALL PERSONS : EDUCATIONAL ATTAINMENT AND FAMILY STATUS, FEBRUARY 1987
 ('000)

Educational attainment	Family status									Total
	Member of a family								Family status not determined	
	Husband or wife		Not-married family head	Full-time student aged 15-24	Other child of family head	Other relative of family head	Total	Not a member of a family		
	With dependents present	Without dependents present								
MALES										
With post-school qualifications	1,084.0	807.7	48.8	8.4	214.2	23.3	2,186.5	358.5	78.0	2,623.0
Degree	231.4	141.1	9.1	4.5	34.1	*	422.8	93.2	15.7	531.7
Trade qualification or apprenticeship	582.2	482.6	27.6	*	133.0	15.4	1,242.5	182.5	42.4	1,467.4
Certificate or diploma	266.0	180.4	12.1	*	45.5	5.0	510.6	80.5	19.6	610.7
Other	*	*	*	*	*	*	10.6	*	*	13.2
Without post-school qualifications(a)	865.5	932.5	60.9	92.3	615.1	59.4	2,625.7	442.2	116.4	3,184.3
Attended highest level of secondary school available	165.1	123.8	10.4	81.0	169.8	8.9	559.0	110.8	26.9	696.8
Did not attend highest level of secondary school available	691.0	797.9	50.0	11.0	442.4	50.0	2,042.3	325.8	88.7	2,456.7
Left at age -										
16 and over	215.8	148.6	10.3	7.3	251.2	11.2	644.5	106.1	27.5	778.1
15 and under	475.2	649.3	39.7	*	191.2	38.8	1,397.8	219.7	61.2	1,678.6
Still at school	*	*	*	270.0	*	*	271.5	*	11.9	285.0
Total	1,949.5	1,740.3	110.1	370.7	830.4	82.6	5,083.6	802.3	206.3	6,092.3
FEMALES										
With post-school qualifications	724.6	496.1	132.3	9.8	158.7	25.0	1,546.4	284.7	73.2	1,904.3
Degree	128.0	73.0	18.5	4.5	20.0	*	247.3	63.2	8.9	319.4
Trade qualification or apprenticeship	66.3	56.2	14.0	*	12.6	*	153.0	24.1	7.1	184.2
Certificate or diploma	519.8	356.1	97.4	4.9	123.6	17.5	1,119.4	195.1	55.9	1,370.4
Other	10.4	10.7	*	*	*	*	26.7	*	*	30.3
Without post-school qualifications(a)	1,175.4	1,247.8	349.5	85.0	363.6	108.4	3,329.7	629.1	144.1	4,102.9
Attended highest level of secondary school available	180.1	145.8	36.2	71.0	124.0	9.4	566.5	106.5	25.9	698.9
Did not attend highest level of secondary school available	982.6	1,086.9	308.1	13.9	238.2	90.8	2,720.6	515.3	115.5	3,351.4
Left at age -										
16 and over	359.9	219.9	69.5	9.8	133.3	12.7	805.3	117.1	35.1	957.4
15 and under	622.8	866.9	238.6	*	104.9	78.1	1,915.3	398.2	80.4	2,394.0
Still at school	*	*	*	261.4	*	*	261.7	*	9.5	272.3
Total	1,900.0	1,743.8	481.8	356.3	522.5	133.5	5,137.9	914.9	226.7	6,279.5
PERSONS										
With post-school qualifications	1,808.6	1,303.8	181.1	18.2	372.9	48.3	3,732.9	643.2	151.2	4,527.3
Degree	359.4	214.1	27.6	9.0	54.0	5.9	670.1	156.4	24.6	851.1
Trade qualification or apprenticeship	648.6	538.8	41.6	*	145.6	19.1	1,395.5	206.6	49.5	1,651.6
Certificate or diploma	785.9	536.6	109.5	6.4	169.0	22.5	1,630.0	275.6	75.5	1,981.1
Other	14.8	14.4	*	*	*	*	37.4	4.6	*	43.4
Without post-school qualifications(a)	2,040.9	2,180.3	410.4	177.3	978.7	167.7	5,955.4	1,071.3	260.5	7,287.2
Attended highest level of secondary school available	345.2	269.5	46.6	151.9	293.8	18.4	1,125.5	217.3	52.9	1,395.6
Did not attend highest level of secondary school available	1,673.7	1,884.7	358.1	24.9	680.6	140.8	4,762.9	841.0	204.2	5,808.1
Left at age -										
16 and over	575.7	368.6	79.8	17.2	384.6	23.9	1,449.8	223.1	62.6	1,735.5
15 and under	1,098.0	1,516.2	278.2	7.8	296.0	116.9	3,313.1	617.9	141.6	4,072.6
Still at school	*	*	*	531.4	*	*	533.2	*	21.4	557.3
Total	3,849.5	3,484.1	591.9	727.0	1,352.9	216.1	10,221.5	1,717.2	433.0	12,371.7

(a) Includes persons who never attended school and those for whom secondary school qualifications could not be determined.

TABLE 6. PERSONS WITH POST-SCHOOL QUALIFICATIONS : MAIN FIELD OF STUDY, AGE AND LABOUR FORCE STATUS, FEBRUARY 1987

Main field of study	Age group					Labour force		Not in labour force	Total	Participation rate
	15-24	25-34	35-44	45-54	55 and over	Em-ployed	Total			
	- '000 -									- per cent -
MALES										
Degree	44.8	175.5	156.3	70.0	85.1	456.8	471.3	60.4	531.7	88.6
Administration(a)	10.0	28.5	32.5	13.7	14.7	89.9	92.2	7.2	99.4	92.8
Law	*	10.4	9.8	*	4.6	26.2	26.4	*	29.9	88.2
Education	*	17.4	16.4	8.9	6.2	44.9	46.3	6.0	52.3	88.6
Medicine	*	12.0	15.3	8.4	11.8	44.4	44.9	4.7	49.7	90.5
Science, computing(b)	12.1	46.5	28.5	11.0	14.7	94.6	97.3	15.5	112.8	86.2
Engineering	7.8	28.6	23.1	12.2	16.1	75.2	77.8	10.0	87.8	88.6
Architecture	*	*	4.9	*	*	13.8	14.4	*	16.2	89.2
Social sciences(c)	4.5	23.3	19.9	8.0	10.7	53.6	56.9	9.3	66.3	85.9
Other	*	4.6	6.0	*	*	14.2	15.1	*	17.4	86.8
Trade qualification or apprenticeship	161.3	367.3	328.9	251.6	358.3	1,129.8	1,189.7	277.7	1,467.4	81.1
Metal	39.1	87.6	80.4	60.2	94.6	277.3	291.4	70.4	361.8	80.5
Service	*	*	4.5	*	6.1	12.5	13.4	4.8	18.1	73.7
Building	30.7	74.0	70.9	62.8	87.3	243.2	256.6	69.0	325.7	78.8
Electrical	24.5	53.0	46.7	25.9	37.3	155.9	162.2	25.1	187.3	86.6
Food and drink	10.1	19.8	19.1	14.2	19.5	62.3	66.9	15.7	82.6	81.0
Wood and furniture	5.7	13.2	7.7	7.3	11.8	34.3	35.9	9.8	45.7	78.5
Printing and allied	*	11.6	11.9	8.9	10.6	36.8	38.5	7.4	45.8	83.9
Automotive and mechanical	34.0	71.7	57.5	37.0	44.8	197.5	207.7	37.2	244.9	84.8
Footwear, clothing and textiles	*	*	*	5.9	11.3	11.2	11.8	8.8	20.6	57.3
Other	13.0	31.5	28.9	26.4	35.0	98.8	105.4	29.4	134.8	78.2
Certificate or diploma	52.1	151.3	168.8	100.5	138.1	495.2	517.1	93.6	610.7	84.7
Secretarial(d)	*	*	*	*	*	*	4.8	*	6.0	80.9
Health(e)	*	13.4	8.1	5.1	6.3	30.1	31.1	5.2	36.4	85.6
Engineering(f)	9.8	34.5	43.0	25.1	35.2	122.9	126.0	21.7	147.7	85.3
Education(g)	*	16.3	18.9	8.7	8.7	45.3	46.7	7.3	53.9	86.5
Business(h)	9.7	32.9	47.7	34.9	48.0	138.5	142.5	30.8	173.2	82.2
Science(i)	6.6	23.8	18.1	11.8	14.5	61.3	64.0	10.8	74.8	85.5
Social studies(j)	*	7.1	5.6	*	*	17.4	19.3	*	21.2	90.8
Other	16.5	21.2	26.9	11.9	21.1	75.5	82.8	14.8	97.6	84.9
Total(k)	260.7	699.2	656.3	423.1	583.7	2,091.9	2,189.5	433.5	2,623.0	83.5
FEMALES										
Degree	41.1	130.1	85.2	32.7	30.2	230.4	241.6	77.8	319.4	75.6
Administration(a)	6.4	11.6	6.8	*	*	23.5	24.0	4.9	28.9	83.0
Law	*	*	*	*	*	6.9	6.9	*	8.4	82.3
Education	5.8	35.1	21.5	13.1	7.4	59.9	62.4	20.5	82.9	75.3
Medicine	*	12.6	6.6	*	4.7	22.2	23.1	6.3	29.4	78.5
Science, computing(b)	9.5	22.0	13.0	5.1	*	40.0	41.8	11.3	53.1	78.7
Engineering	*	*	*	*	*	*	*	*	*	*
Architecture	*	*	*	*	*	*	*	*	*	*
Social sciences(c)	12.4	39.8	33.1	9.3	9.0	69.2	74.0	29.6	103.6	71.4
Other	*	*	*	*	*	5.6	6.2	*	9.6	64.9
Trade qualification or apprenticeship	24.1	37.8	42.9	28.3	51.1	88.1	93.9	90.3	184.2	51.0
Metal	*	*	*	*	*	*	*	*	*	*
Service	12.3	23.5	24.3	7.8	12.2	43.6	45.8	34.3	80.1	57.2
Building	*	*	*	*	*	*	*	*	*	*
Electrical	*	*	*	*	*	*	*	*	*	*
Food and drink	*	*	*	*	*	8.8	9.9	*	14.2	69.7
Wood and furniture	*	*	*	*	*	*	*	*	*	*
Printing and allied	*	*	*	*	*	*	*	*	6.1	*
Automotive and mechanical	*	*	*	*	*	*	*	*	*	*
Footwear, clothing and textiles	*	*	8.6	13.3	32.0	20.8	22.0	37.9	59.9	36.7
Other	4.6	*	*	*	*	9.2	9.9	7.4	17.2	57.3
Certificate or diploma	219.6	397.3	317.1	176.0	260.4	813.8	878.1	492.3	1,370.4	64.1
Secretarial(d)	111.9	140.0	116.3	56.9	90.0	290.4	317.7	197.4	515.1	61.7
Health(e)	42.6	120.8	88.9	61.2	78.6	238.3	251.8	140.3	392.1	64.2
Engineering(f)	*	*	*	*	*	7.4	7.8	*	11.2	69.8
Education(g)	19.1	64.0	54.1	28.4	40.7	129.9	136.9	69.4	206.3	66.4
Business(h)	11.0	26.0	22.3	10.2	17.2	54.9	58.9	27.8	86.7	67.9
Science(i)	*	7.9	*	*	*	9.6	11.8	5.9	17.7	66.8
Social studies(j)	9.0	15.9	14.6	9.5	19.2	34.7	38.9	29.4	68.3	56.9
Other	21.9	19.1	13.9	7.6	10.6	48.8	54.1	18.8	72.9	74.2
Total(k)	289.9	574.0	450.8	240.7	348.8	1,147.7	1,230.9	673.4	1,904.3	64.6

For footnotes see end of table.

TABLE 6. PERSONS WITH POST-SCHOOL QUALIFICATIONS : MAIN FIELD OF STUDY, AGE AND LABOUR FORCE STATUS, FEBRUARY 1987-continued

Main field of study	Age group					Labour force		Not in labour force	Total	Participation rate
	15-24	25-34	35-44	45-54	55 and over	Em- ployed	Total			
	— '000—									— per cent—
PERSONS										
Degree	86.0	305.6	241.6	102.7	115.3	687.3	712.9	138.2	851.1	83.8
Administration(a)	16.4	40.2	39.3	15.6	16.9	113.4	116.2	12.1	128.3	90.6
Law	*	14.5	11.3	*	5.4	33.2	33.3	5.0	38.3	86.9
Education	9.1	52.6	37.9	22.0	13.5	104.8	108.7	26.5	135.1	80.4
Medicine	5.6	24.6	21.9	10.4	16.5	66.5	68.0	11.1	79.0	86.0
Science, computing(b)	21.6	68.5	41.5	16.1	18.3	134.6	139.1	26.9	165.9	83.8
Engineering	8.6	29.5	23.4	12.5	16.1	77.2	79.7	10.3	90.1	88.5
Architecture	*	4.9	5.3	*	*	15.0	15.8	*	17.5	90.0
Social sciences(c)	16.9	63.1	53.0	17.3	19.7	122.8	130.9	39.0	169.9	77.1
Other	*	7.8	8.0	*	5.8	19.8	21.3	5.7	27.0	79.0
Trade qualification or apprenticeship	185.4	405.2	371.8	279.9	409.4	1,217.9	1,283.6	368.0	1,651.6	77.7
Metal	39.1	87.6	80.4	60.4	94.8	277.3	291.6	70.6	362.2	80.5
Service	13.7	26.5	28.8	10.9	18.3	56.1	59.2	39.1	98.2	60.2
Building	30.9	74.4	71.4	62.8	87.5	243.9	257.3	69.5	326.9	78.7
Electrical	24.5	53.6	47.8	26.4	38.4	157.6	163.8	26.9	190.8	85.9
Food and drink	13.4	23.5	21.5	17.2	21.3	71.1	76.8	20.0	96.9	79.3
Wood and furniture	5.7	13.2	8.0	7.3	11.8	34.3	35.9	10.1	46.0	78.0
Printing and allied	*	13.6	12.9	10.0	11.6	39.0	40.9	11.0	51.9	78.8
Automotive and mechanical	34.3	72.0	58.0	37.0	44.8	198.7	209.0	37.2	246.2	84.9
Footwear, clothing and textiles	*	5.5	10.0	19.2	43.4	32.0	33.8	46.7	80.5	42.0
Other	17.6	35.2	33.1	28.6	37.5	107.9	115.3	36.8	152.1	75.8
Certificate or diploma	271.7	548.6	485.8	276.5	398.5	1,309.0	1,395.2	585.9	1,981.1	70.4
Secretarial(d)	113.9	142.1	116.7	57.2	91.1	294.6	322.6	198.5	521.1	61.9
Health(e)	46.1	134.2	97.1	66.2	84.9	268.3	283.0	145.5	428.5	66.0
Engineering(f)	10.7	38.1	46.4	25.6	38.0	130.3	133.8	25.1	158.9	84.2
Education(g)	20.4	80.3	73.0	37.2	49.4	175.2	183.6	76.6	260.2	70.6
Business(h)	20.7	58.9	70.0	45.1	65.2	193.4	201.4	58.6	260.0	77.5
Science(i)	9.8	31.7	21.7	13.5	15.8	70.8	75.8	16.7	92.5	82.0
Social studies(j)	11.7	23.0	20.2	12.2	22.3	52.1	58.1	31.3	89.5	65.0
Other	38.4	40.2	40.8	19.5	31.7	124.3	137.0	33.6	170.6	80.3
Total(k)	550.6	1,273.2	1,107.2	663.8	932.5	3,239.6	3,420.4	1,106.9	4,527.3	75.6

(a) Includes business studies and commerce. (b) Includes mathematics, veterinary and agricultural science. (c) Includes arts and humanities. (d) Includes typing and data processing. (e) Includes nursing, para-medical and other health. (f) Includes communication, transport and architecture. (g) Includes teacher training. (h) Includes commerce and administration. (i) Includes computing and agriculture. (j) Includes arts and crafts. (k) Includes persons with other post-school qualifications.

**TABLE 7. EMPLOYED PERSONS : EDUCATIONAL ATTAINMENT AND INDUSTRY,
FEBRUARY 1987
('000)**

Industry	Educational attainment								Total (c)
	With post-school qualifications				Without post-school qualifications				
	Degree	Trade qualification or appren- ticeship	Certificate or diploma	Total (a)	Attend highest level of secondary school available	Did not attend highest level of secondary school available and left at age—		Total (b)	
						16 and over	15 and under		
MALES									
Agriculture, forestry, fishing and hunting	8.5	36.8	28.5	75.3	33.5	52.7	131.4	218.5	299.8
Mining	8.9	37.2	8.9	55.2	4.6	13.1	24.3	42.4	97.5
Manufacturing	48.3	289.7	71.2	410.3	84.1	132.5	212.6	431.7	844.6
Electricity, gas and water	9.7	45.1	15.4	70.2	10.2	14.4	25.2	50.3	120.5
Construction	11.3	223.1	27.4	262.7	24.4	53.0	97.0	175.3	439.2
Wholesale and retail trade	40.5	218.9	77.2	338.3	119.8	131.8	162.6	415.1	788.5
Transport and storage	10.5	69.0	31.1	111.7	36.8	44.8	111.6	194.2	306.8
Communication	*	26.2	10.3	40.6	15.7	16.2	21.2	54.4	95.1
Finance, property and business services	98.2	36.7	78.8	214.4	77.0	44.8	40.0	163.2	379.2
Public administration and defence	37.1	37.5	37.8	113.4	34.5	23.2	48.7	108.2	222.0
Community services	168.0	61.2	86.9	316.4	37.2	34.1	44.9	117.4	434.3
Recreation, personal and other services	12.1	48.5	21.8	83.4	38.5	35.7	40.6	115.4	203.5
Total	456.8	1,129.8	495.2	2,091.9	516.5	596.3	960.2	2,086.1	4,230.9
FEMALES									
Agriculture, forestry, fishing and hunting	*	*	27.7	36.8	11.0	19.1	48.5	78.9	118.8
Mining	*	*	*	5.3	*	*	*	5.3	10.6
Manufacturing	10.3	9.5	57.9	79.4	36.4	57.6	119.7	216.2	297.0
Electricity, gas and water	*	*	4.6	6.0	*	*	*	9.2	15.3
Construction	*	*	17.2	23.2	8.5	13.6	21.3	43.8	67.3
Wholesale and retail trade	13.7	18.6	117.6	153.5	89.7	139.9	203.7	436.5	638.7
Transport and storage	*	*	16.8	23.7	11.9	12.9	15.6	40.8	64.5
Communication	*	*	6.6	9.6	8.2	6.7	9.9	25.1	34.7
Finance, property and business services	25.5	4.6	108.2	140.0	72.4	70.3	59.9	203.2	344.5
Public administration and defence	14.8	*	39.3	57.6	22.5	18.9	19.1	62.7	120.3
Community services	142.8	10.4	362.5	518.6	64.1	74.3	114.9	256.0	777.2
Recreation, personal and other services	9.1	32.1	51.1	94.0	41.4	48.9	84.0	176.0	278.5
Total	230.4	88.1	813.8	1,147.7	370.8	468.4	700.2	1,553.5	2,767.3
PERSONS									
Agriculture, forestry, fishing and hunting	11.6	40.9	56.2	112.1	44.5	71.9	179.9	297.4	418.5
Mining	9.8	37.2	13.1	60.4	5.8	15.1	26.4	47.7	108.1
Manufacturing	58.6	299.2	129.2	489.7	120.5	190.0	332.3	647.8	1,141.6
Electricity, gas and water	10.5	45.6	20.1	76.2	13.7	18.5	26.8	59.5	135.7
Construction	14.7	225.5	44.6	285.9	33.0	66.6	118.3	219.0	506.4
Wholesale and retail trade	54.2	237.5	194.8	491.7	209.5	271.7	366.3	851.6	1,427.2
Transport and storage	14.2	71.5	47.9	135.4	48.7	57.7	127.2	234.9	371.3
Communication	6.1	26.4	16.9	50.2	23.9	22.9	31.1	79.6	129.8
Finance, property and business services	123.7	41.2	187.0	354.5	149.4	115.1	99.9	366.4	723.6
Public administration and defence	51.9	40.7	77.0	171.1	57.1	42.1	67.8	170.9	342.3
Community services	310.8	71.6	449.4	835.0	101.3	108.3	159.8	373.4	1,211.5
Recreation, personal and other services	21.2	80.6	72.9	177.4	79.9	84.6	124.6	291.4	482.1
Total	687.3	1,217.9	1,309.0	3,239.6	887.4	1,064.6	1,660.4	3,639.6	6,998.2

(a) Includes persons with other post-school qualifications. (b) Includes persons who never attended school and those for whom secondary school qualifications could not be determined. (c) Includes persons still at school.

TABLE 8. EMPLOYED PERSONS : EDUCATIONAL ATTAINMENT AND OCCUPATION,
FEBRUARY 1987
(' 000)

Educational attainment	Occupation								Total
	Managers and administrators	Pro-fessionals	Para-pro-fessionals	Trades-persons	Clerks	Sales-persons and personal service workers	Plant and machine operators and drivers	Labourers and related workers	
MALES									
With post-school qualifications	277.3	464.7	153.0	677.0	93.5	116.0	138.2	172.3	2,091.9
Degree	69.9	307.5	14.1	11.5	23.3	18.5	*	7.7	456.8
Trade qualification or apprenticeship	111.4	32.0	61.4	622.1	26.5	48.0	102.4	126.0	1,129.8
Certificate or diploma	94.2	124.7	76.6	41.2	42.0	49.0	29.8	37.6	495.2
Other	*	*	*	*	*	*	*	*	10.1
Without post-school qualifications(a)	308.6	58.6	74.0	350.6	226.4	205.3	331.4	531.2	2,086.1
Attended highest level of secondary school available	76.2	34.9	29.3	57.9	103.5	79.0	41.8	94.1	516.5
Did not attend highest level of secondary school available	230.1	23.0	44.3	291.5	119.3	125.7	288.2	434.4	1,556.5
Left at age -									
16 and over	73.8	12.9	21.0	137.5	65.8	58.8	79.4	147.1	596.3
15 and under	156.3	10.1	23.3	154.0	53.5	66.9	208.8	287.3	960.2
Still at school	*	*	*	*	*	17.9	*	31.4	52.9
Total	585.8	523.8	227.8	1,028.5	321.1	339.1	469.9	734.8	4,230.9
FEMALES									
With post-school qualifications	59.2	287.0	145.7	45.4	353.3	173.3	12.6	71.2	1,147.7
Degree	11.1	155.1	11.0	*	35.2	12.4	*	*	230.4
Trade qualification or apprenticeship	*	*	*	31.0	16.9	16.5	*	13.5	88.1
Certificate or diploma	41.4	130.1	131.4	12.6	297.3	139.7	9.2	52.1	813.8
Other	*	*	*	*	*	4.8	*	*	15.3
Without post-school qualifications(a)	114.7	30.5	30.1	66.9	547.4	394.8	71.5	297.5	1,553.5
Attended highest level of secondary school available	17.9	14.5	15.5	11.9	159.8	105.3	6.7	39.2	370.8
Did not attend highest level of secondary school available	95.8	15.7	14.4	54.3	381.1	287.8	64.1	255.4	1,168.6
Left at age -									
16 and over	30.3	8.3	7.2	22.6	186.4	126.5	19.5	67.5	468.4
15 and under	65.5	7.4	7.2	31.7	194.7	161.3	44.6	187.9	700.2
Still at school	*	*	*	*	*	52.3	*	10.1	66.1
Total	173.8	318.1	175.8	112.9	902.9	620.4	84.6	378.9	2,767.3
PERSONS									
With post-school qualifications	336.4	751.7	298.7	722.4	446.9	289.3	150.7	243.5	3,239.6
Degree	81.0	462.6	25.1	13.0	58.5	30.9	5.4	10.8	687.3
Trade qualification or apprenticeship	115.7	33.0	64.0	653.0	43.4	64.5	104.7	139.5	1,217.9
Certificate or diploma	135.6	254.8	208.0	53.8	339.3	188.7	39.0	89.7	1,309.0
Other	*	*	*	*	5.6	5.1	*	*	25.4
Without post-school qualifications(a)	423.2	89.2	104.1	417.5	773.9	600.1	402.9	828.7	3,639.6
Attended highest level of secondary school available	94.0	49.4	44.8	69.7	263.3	184.3	48.5	133.2	887.4
Did not attend highest level of secondary school available	325.9	38.7	58.7	345.8	500.5	413.5	352.3	689.8	2,725.0
Left at age -									
16 and over	104.0	21.3	28.2	160.1	252.2	185.3	98.8	214.6	1,064.6
15 and under	221.8	17.4	30.5	185.7	248.2	228.2	253.4	475.1	1,660.4
Still at school	*	*	*	*	*	70.2	*	41.5	119.0
Total	759.6	841.9	403.6	1,141.4	1,223.9	959.6	554.5	1,113.7	6,998.2

(a) Includes persons who never attended school and those for whom secondary school qualifications could not be determined.

TABLE 9. EMPLOYED PERSONS : EDUCATIONAL ATTAINMENT AND AGE, FEBRUARY 1987

Educational attainment	Age group						Total	— per cent —
	15-19	20-24	25-34	35-44	45-54	55 and over		
— '000 —								
MALES								
With post-school qualifications	15.6	209.2	644.6	614.0	380.8	227.7	2,091.9	49.4
Degree	*	36.4	163.4	147.7	65.9	43.1	456.8	10.8
Trade qualification or apprenticeship	9.2	134.4	340.3	303.0	218.6	124.3	1,129.8	26.7
Certificate or diploma	5.6	36.8	136.7	161.2	95.2	59.6	495.2	11.7
Other	*	*	*	*	*	*	10.1	0.2
Without post-school qualifications(a)	266.6	320.9	505.1	435.2	309.8	248.6	2,086.1	49.3
Attended highest level of secondary school available	82.6	124.5	165.8	83.9	35.9	23.8	516.5	12.2
Did not attend highest level of secondary school available	183.8	195.1	336.5	347.0	270.8	223.2	1,556.5	36.8
Left at age -								
18 and over	*	6.7	8.6	8.7	*	*	32.2	0.8
16 or 17	109.3	114.9	165.1	97.7	47.0	30.1	564.0	13.3
14 or 15	71.0	71.0	157.0	205.6	169.5	137.9	812.0	19.2
13 and under	*	*	5.8	35.0	51.1	52.5	148.2	3.5
Still at school	52.9	*	52.9	1.3
Total	335.2	530.0	1,149.7	1,049.1	690.6	476.3	4,230.9	100.0
FEMALES								
With post-school qualifications	42.7	186.8	382.3	305.7	160.6	69.5	1,147.7	41.5
Degree	*	32.7	98.2	61.1	27.4	11.0	230.4	8.3
Trade qualification or apprenticeship	*	14.7	22.4	26.4	15.0	5.1	88.1	3.2
Certificate or diploma	37.5	136.1	257.0	215.6	116.3	51.4	813.8	29.4
Other	*	*	4.7	*	*	*	15.3	0.6
Without post-school qualifications(a)	211.1	255.4	344.9	386.2	243.5	112.4	1,553.5	56.1
Attended highest level of secondary school available	85.2	101.0	87.7	56.0	25.2	15.7	370.8	13.4
Did not attend highest level of secondary school available	125.4	153.8	254.4	325.5	214.4	95.0	1,168.6	42.2
Left at age -								
18 and over	*	5.1	4.2	*	*	*	14.3	0.5
16 or 17	71.1	98.7	120.0	99.6	44.9	19.7	454.0	16.4
14 or 15	53.0	49.0	125.8	201.2	136.4	61.6	627.0	22.7
13 and under	*	*	*	22.2	31.9	13.3	73.2	2.6
Still at school	66.1	*	66.1	2.4
Total	319.9	442.2	727.3	691.9	404.1	181.9	2,767.3	100.0
PERSONS								
With post-school qualifications	58.4	396.0	1,026.9	919.6	541.4	297.2	3,239.6	46.3
Degree	*	69.1	261.6	208.8	93.3	54.1	687.3	9.8
Trade qualification or apprenticeship	13.6	149.2	362.7	329.4	233.6	129.4	1,217.9	17.4
Certificate or diploma	43.1	172.9	393.7	376.7	211.6	111.0	1,309.0	18.7
Other	*	4.8	8.9	4.7	*	*	25.4	0.4
Without post-school qualifications(a)	477.7	576.3	850.0	821.4	553.2	361.0	3,639.6	52.0
Attended highest level of secondary school available	167.8	225.5	253.5	139.9	61.1	39.6	887.4	12.7
Did not attend highest level of secondary school available	309.3	348.9	590.9	672.6	485.2	318.2	2,725.0	38.9
Left at age -								
18 and over	*	11.8	12.8	11.2	*	*	46.6	0.7
16 or 17	180.4	213.5	285.1	197.3	91.9	49.8	1,018.1	14.5
14 or 15	123.9	120.1	282.9	406.8	305.9	199.4	1,439.0	20.6
13 and under	*	*	10.1	57.3	83.0	65.8	221.4	3.2
Still at school	119.0	*	119.0	1.7
Total	655.1	972.3	1,876.9	1,741.0	1,094.6	658.2	6,998.2	100.0

(a) Includes persons who never attended school and those for whom secondary school qualifications could not be determined.

**TABLE 10. UNEMPLOYED PERSONS : UNEMPLOYMENT RATE AND UNEMPLOYMENT/POPULATION RATIO
BY EDUCATIONAL ATTAINMENT AND AGE, FEBRUARY 1987**

Educational attainment	Age group						Total
	15-19	20-24	25-34	35-44	45-54	55 and over	
UNEMPLOYED PERSONS ('000)							
With post-school qualifications(a)	12.2	40.0	57.8	36.4	21.6	12.9	180.8
Degree	*	6.1	9.7	6.4	*	*	25.6
Trade qualification or apprenticeship	*	13.1	18.4	11.6	11.7	9.5	65.7
Certificate or diploma	10.4	20.3	28.2	17.7	7.7	*	86.2
Without post-school qualifications(b)	146.9	96.0	105.2	66.8	38.4	23.5	476.9
Attended highest level of secondary school available	44.3	28.3	21.8	9.8	*	*	110.7
Did not attend highest level of secondary school available	102.7	67.4	82.8	56.0	34.5	19.1	362.4
Left at age -							
16 and over	50.6	35.5	34.1	16.7	6.0	*	146.2
15 and under	52.1	31.9	48.7	39.3	28.5	15.8	216.2
Still at school	41.7	*	41.9
Total	200.9	136.2	163.0	103.1	60.0	36.4	699.6
UNEMPLOYMENT RATE (per cent)							
With post-school qualifications(a)	17.3	9.2	5.3	3.8	3.8	4.2	5.3
Degree	*	8.1	3.6	3.0	*	*	3.6
Trade qualification or apprenticeship	*	8.1	4.8	3.4	4.8	6.8	5.1
Certificate or diploma	19.4	10.5	6.7	4.5	3.5	*	6.2
Without post-school qualifications(b)	23.5	14.3	11.0	7.5	6.5	6.1	11.6
Attended highest level of secondary school available	20.9	11.2	7.9	6.5	*	*	11.1
Did not attend highest level of secondary school available	24.9	16.2	12.3	7.7	6.6	5.7	11.7
Left at age -							
16 and over	21.6	13.6	10.3	7.4	5.9	*	12.1
15 and under	29.3	20.5	14.2	7.8	6.8	5.6	11.5
Still at school	25.9	*	26.0
Total	23.5	12.3	8.0	5.6	5.2	5.2	9.1
UNEMPLOYMENT/POPULATION RATIO (per cent)							
With post-school qualifications(a)	16.6	8.4	4.5	3.3	3.2	1.4	4.0
Degree	*	7.2	3.2	2.7	*	*	3.0
Trade qualification or apprenticeship	*	7.7	4.5	3.1	4.2	2.3	4.0
Certificate or diploma	18.6	9.4	5.1	3.7	2.8	*	4.4
Without post-school qualifications(b)	19.9	11.5	.8	5.5	4.1	1.1	6.5
Attended highest level of secondary school available	16.1	9.0	6.3	5.3	*	*	7.9
Did not attend highest level of secondary school available	22.3	13.0	8.4	5.6	4.2	1.0	6.2
Left at age -							
16 and over	19.7	11.5	7.3	5.5	4.1	*	8.4
15 and under	25.5	15.4	9.4	5.6	4.2	0.9	5.3
Still at school	7.5	*	7.5
Total	14.7	10.4	6.2	4.5	3.8	1.2	5.7

(a) Includes persons with other post-school qualifications. (b) Includes persons who never attended school and those for whom secondary school qualifications could not be determined.

TABLE 11. UNEMPLOYED PERSONS : EDUCATIONAL ATTAINMENT AND AGE, FEBRUARY 1987

Educational attainment	Age group						Total	
	15-19	20-24	25-34	35-44	45-54	55 and over		
	- '000 -						- per cent -	
MALES								
With post-school qualifications(a)	*	21.7	30.5	18.1	14.2	11.4	97.6	24.7
Degree	*	*	4.9	*	*	*	14.5	3.7
Trade qualification or apprenticeship	*	11.9	16.7	10.7	10.5	9.2	59.9	15.2
Certificate or diploma	*	5.4	7.9	*	*	*	21.9	5.5
Without post-school qualifications(b)	81.7	56.6	64.2	34.5	21.6	21.0	279.6	70.7
Attended highest level of secondary school available	23.2	15.2	11.6	6.8	*	*	61.0	15.4
Did not attend highest level of secondary school available	58.4	41.4	52.4	27.5	19.6	17.3	216.5	54.8
Left at age -								
16 and over	28.0	22.4	18.3	8.4	*	*	83.2	21.0
15 and under	30.4	19.0	34.1	19.1	16.1	14.6	133.3	33.7
Still at school	18.2	*	18.2	4.6
Total	101.6	78.2	94.7	52.6	35.9	32.3	395.4	100.0
FEMALES								
With post-school qualifications(a)	10.4	18.3	27.3	18.3	7.3	*	83.2	27.3
Degree	*	*	4.8	*	*	*	11.1	3.7
Trade qualification or apprenticeship	*	*	*	*	*	*	5.7	1.9
Certificate or diploma	9.5	14.9	20.3	13.5	5.3	*	64.3	21.1
Without post-school qualifications(b)	65.3	39.4	41.0	32.2	16.8	*	197.3	64.9
Attended highest level of secondary school available	21.1	13.1	10.2	*	*	*	49.7	16.3
Did not attend highest level of secondary school available	44.2	26.0	30.4	28.5	14.9	*	145.9	48.0
Left at age -								
16 and over	22.6	13.2	15.9	8.3	*	*	63.0	20.7
15 and under	21.7	12.9	14.5	20.2	12.4	*	82.9	27.3
Still at school	23.5	*	23.7	7.8
Total	99.2	58.0	68.3	50.5	24.1	*	304.2	100.0
PERSONS								
With post-school qualifications(a)	12.2	40.0	57.8	36.4	21.6	12.9	180.8	25.8
Degree	*	6.1	9.7	6.4	*	*	25.6	3.7
Trade qualification or apprenticeship	*	13.1	18.4	11.6	11.7	9.5	65.7	9.4
Certificate or diploma	10.4	20.3	28.2	17.7	7.7	*	86.2	12.3
Without post-school qualifications(b)	146.9	96.0	105.2	66.8	38.4	23.5	476.9	68.2
Attended highest level of secondary school available	44.3	28.3	21.8	9.8	*	*	110.7	15.8
Did not attend highest level of secondary school available	102.7	67.4	82.8	56.0	34.5	19.1	362.4	51.8
Left at age -								
16 and over	50.6	35.5	34.1	16.7	6.0	*	146.2	20.9
15 and under	52.1	31.9	48.7	39.3	28.5	15.8	216.2	30.9
Still at school	41.7	*	41.9	6.0
Total	200.9	136.2	163.0	103.1	60.0	36.4	699.6	100.0

(a) Includes persons with other post-school qualifications. (b) Includes persons who never attended school and those for whom secondary school qualifications could not be determined.

TABLE 12. UNEMPLOYED PERSONS : EDUCATIONAL ATTAINMENT AND DURATION OF CURRENT PERIOD OF UNEMPLOYMENT, FEBRUARY 1987

Educational attainment	Duration of current period of unemployment (weeks)						Total	Average (mean) duration	Median duration
	1 and under 4	4 and under 8	8 and under 13	13 and under 26	26 and under 52	52 and over			
	— '000—								
MALES									
With post-school qualifications(a)	14.8	13.5	12.9	13.9	12.2	30.2	97.6	53.2	17
Degree	*	*	*	*	*	*	14.5	50.0	13
Trade qualification or apprenticeship Certificate or diploma	10.0	8.5	7.7	8.0	6.1	19.7	59.9	56.5	17
Certificate or diploma	*	*	*	*	*	7.1	21.9	47.2	26
Without post-school qualifications(b)	33.5	33.2	36.2	37.9	42.5	96.4	279.6	60.5	24
Attended highest level of secondary school available	10.6	9.2	13.0	8.1	9.4	10.7	61.0	35.6	11
Did not attend highest level of secondary school available	22.9	24.0	23.2	29.7	32.8	83.9	216.5	66.7	26
Left at age -									
16 and over	9.6	10.7	13.3	10.4	11.6	27.7	83.2	52.4	20
15 and under	13.3	13.4	9.9	19.3	21.2	56.2	133.3	75.7	32
Still at school	5.8	*	*	*	*	*	18.2	17.5	9
Total	54.2	49.5	52.2	53.6	57.0	128.9	395.4	56.7	20
FEMALES									
With post-school qualifications(a)	25.4	12.5	13.7	11.7	8.5	11.4	83.2	23.2	8
Degree	*	*	*	*	*	*	11.1	19.9	11
Trade qualification or apprenticeship Certificate or diploma	21.9	10.0	9.0	8.0	6.0	9.4	64.3	23.2	8
Certificate or diploma	*	*	*	*	*	*	5.7	33.2	11
Without post-school qualifications(b)	38.2	27.5	28.1	25.0	27.6	51.0	197.3	39.8	13
Attended highest level of secondary school available	7.8	8.8	11.2	7.3	7.8	6.8	49.7	25.6	11
Did not attend highest level of secondary school available	30.0	18.7	16.5	17.3	19.5	44.0	145.9	44.7	16
Left at age -									
16 and over	12.6	9.7	7.8	7.5	8.7	16.8	63.0	39.0	13
15 and under	17.4	9.0	8.7	9.8	10.9	27.2	82.9	49.1	20
Still at school	8.3	*	6.3	*	*	*	23.7	13.5	7
Total	71.9	44.2	48.0	38.6	37.4	64.1	304.2	33.2	10
PERSONS									
With post-school qualifications(a)	40.3	26.1	26.6	25.6	20.7	41.6	180.8	39.4	12
Degree	*	*	4.8	4.7	*	*	25.6	36.9	11
Trade qualification or apprenticeship Certificate or diploma	10.7	9.4	9.5	9.1	6.6	20.4	65.7	54.5	15
Certificate or diploma	24.7	11.7	12.0	11.2	10.1	16.5	86.2	29.3	10
Without post-school qualifications(b)	71.7	60.7	64.2	62.8	70.1	147.4	476.9	51.9	18
Attended highest level of secondary school available	18.4	18.0	24.1	15.5	17.2	17.4	110.7	31.1	11
Did not attend highest level of secondary school available	52.9	42.7	39.6	47.0	52.3	127.8	362.4	57.9	24
Left at age -									
16 and over	22.2	20.4	21.0	17.9	20.3	44.4	146.2	46.6	16
15 and under	30.7	22.3	18.6	29.1	32.1	83.4	216.2	65.5	26
Still at school	14.1	6.9	9.4	*	*	*	41.9	15.3	8
Total	126.1	93.7	100.2	92.2	94.4	193.0	699.6	46.5	14

(a) Includes persons with other post-school qualifications. (b) Includes persons who never attended school and those for whom secondary school qualifications could not be determined.

TABLE 13. PERSONS NOT IN THE LABOUR FORCE : EDUCATIONAL ATTAINMENT, MAIN ACTIVITY WHILE OUT OF THE LABOUR FORCE AND WHETHER IN THE LABOUR FORCE IN THE LAST TWELVE MONTHS, FEBRUARY 1987 ('000)

Educational attainment	Main activity while out of the labour force									Total(b)
	Kept house	Attended an educational institution	Retired or voluntarily inactive	Unpaid leave	Own illness, injury	Own disability or handicap	Worked in unpaid voluntary work	Travelled, moved house, holiday	Other(a)	
IN THE LABOUR FORCE IN THE LAST TWELVE MONTHS										
With post-school qualifications	116.2	16.2	33.8	4.5	13.9	*	*	14.9	7.2	238.8
Degree	19.6	7.3	4.8	*	*	*	*	*	*	43.3
Trade qualification or apprenticeship	11.6	*	17.9	*	8.5	*	*	5.0	*	56.3
Certificate or diploma	83.8	6.4	11.1	*	*	*	*	7.8	*	136.2
Other	*	*	*	*	*	*	*	*	*	*
Without post-school qualifications(c)	174.6	44.2	41.5	7.9	21.2	*	*	15.7	8.1	368.2
Attended highest level of secondary school available	25.4	34.8	6.6	*	*	*	*	8.8	*	89.9
Did not attend highest level of secondary school available	148.3	9.4	34.7	4.7	19.3	*	*	7.0	6.9	274.7
Left at age -										
16 and over	50.7	6.3	5.7	*	5.2	*	*	*	*	89.2
15 and under	97.7	*	29.0	*	14.1	*	*	*	5.5	185.5
Still at school	*	68.2	*	*	*	*	*	*	*	75.8
Total	291.0	128.5	75.6	12.6	35.2	*	*	33.5	15.6	682.7
Males	6.8	68.5	60.7	5.2	24.1	*	*	18.9	9.1	236.2
Females	284.2	60.0	14.8	7.4	11.1	*	*	14.6	6.5	446.6
NOT IN THE LABOUR FORCE IN THE LAST TWELVE MONTHS										
With post-school qualifications	451.6	16.8	318.5	*	43.8	9.3	17.1	*	6.8	868.2
Degree	37.7	9.8	38.9	*	*	*	*	*	*	94.9
Trade qualification or apprenticeship	76.3	*	188.0	*	30.2	7.4	4.9	*	*	311.8
Certificate or diploma	327.6	5.6	90.0	*	10.1	*	8.8	*	*	449.7
Other	9.9	*	*	*	*	*	*	*	*	11.8
Without post-school qualifications(d)	1,815.6	79.0	675.3	*	122.5	62.0	23.4	*	20.6	2,802.5
Attended highest level of secondary school available	179.7	59.1	51.8	*	8.0	*	*	*	*	307.6
Did not attend highest level of secondary school available	1,613.3	18.7	605.4	*	112.7	54.5	20.2	*	18.0	2,445.9
Left at age -										
16 and over	324.6	11.1	66.8	*	16.8	10.1	*	*	*	435.4
15 and under	1,288.7	7.7	538.7	*	95.9	44.4	17.8	*	14.9	2,010.5
Never attended school	15.8	*	15.0	*	*	*	*	*	*	37.6
Still at school	*	319.3	*	*	*	*	*	*	*	320.5
Total	2,267.9	415.0	993.7	*	166.3	71.3	40.4	7.5	27.8	3,991.2
Males	44.9	217.1	767.1	*	118.9	51.7	12.9	*	12.5	1,229.9
Females	2,222.9	197.9	226.6	*	47.3	19.6	27.5	*	15.3	2,761.3
TOTAL										
With post-school qualifications	567.8	32.9	352.3	5.1	57.7	9.9	19.6	18.6	14.0	1,106.9
Degree	57.3	17.1	43.7	*	*	*	*	*	*	138.2
Trade qualification or apprenticeship	87.9	*	205.9	*	38.8	7.4	5.9	6.0	*	368.0
Certificate or diploma	411.4	12.0	101.1	*	14.3	*	9.7	10.2	7.5	585.9
Other	11.1	*	*	*	*	*	*	*	*	14.8
Without post-school qualifications(d)	1,990.2	123.2	716.8	8.2	143.6	64.7	25.2	19.5	28.7	3,170.6
Attended highest level of secondary school available	205.1	93.8	58.4	*	9.7	*	*	9.9	*	397.5
Did not attend highest level of secondary school available	1,761.7	28.1	640.1	5.0	132.0	56.9	21.8	9.6	24.9	2,720.6
Left at age -										
16 and over	375.3	17.4	72.5	*	22.0	11.1	*	*	4.5	524.6
15 and under	1,386.4	10.7	567.7	*	110.0	45.8	18.4	6.4	20.4	2,196.0
Never attended school	15.8	*	15.0	*	*	*	*	*	*	38.4
Still at school	*	387.5	*	*	*	*	*	*	*	396.4
Total	2,558.9	543.6	1,069.3	13.9	201.5	74.7	44.8	41.1	43.3	4,673.9
Males	51.7	285.7	827.8	5.8	143.0	54.5	15.2	22.9	21.6	1,466.0
Females	2,507.1	257.9	241.5	8.0	58.5	20.2	29.6	18.2	21.7	3,207.9

(a) Includes persons looking after ill or disabled persons. (b) Includes persons whose main activity could not be determined. (c) Includes persons who never attended school and those for whom secondary school qualifications could not be determined. (d) Includes persons whose secondary school qualifications could not be determined.

TECHNICAL NOTE

Estimation procedure

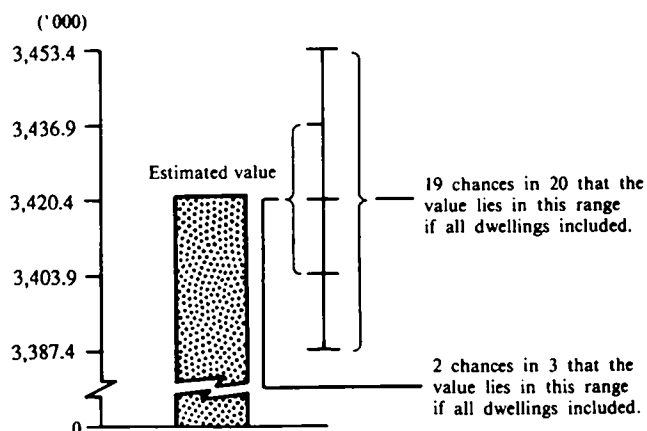
The estimates are derived from the population survey by use of a ratio estimation procedure which ensures that the estimates conform to an independently estimated distribution of the population for each capital city and remainder of State by age and sex, rather than to the corresponding distribution within the sample itself.

Reliability of the estimates

2. Since the estimates in this publication are based on information obtained from occupants of a sample of dwellings, they are subject to sampling variability, that is, they may differ from those that would have been produced if all dwellings had been included in the survey. One measure of the likely difference is given by the *standard error*, which indicates the extent to which an estimate might have varied by chance because only a sample of dwellings was included. There are about two chances in three that a sample estimate will differ by less than one standard error from the number that would have been obtained if all dwellings had been included, and about nineteen chances in twenty that the difference will be less than two standard errors. Another measure of the likely difference is the *relative standard error*, which is obtained by expressing the standard error as a percentage of the estimate.

3. Space does not allow for the separate indication of the standard errors of all estimates in this publication. A table of standard errors for general application is given on the following page. Since they are averages based on calculations for a limited number of past surveys over a wide range of labour force characteristics these figures will not give a precise measure of the standard error of a particular estimate but they will provide an indication of its magnitude.

4. An example of the calculation and the use of standard errors in relation to estimates of persons is as follows. From Table 4 the estimated number of persons in the labour force with post-school qualifications is 3,420,400. Since this estimate is between 2,000,000 and 5,000,000 the standard error for Australia will be between 14,200 and 19,100 in the standard error table and can be approximated as 16,500 (rounded to the nearest 100). Therefore there are about two chances in three that the value that would have been produced if all dwellings had been included in the survey will fall in the range 3,403,900 to 3,436,900 and about nineteen chances in twenty that the value will fall within the range 3,387,400 and 3,453,400. This example is illustrated in the diagram.



5. As can be seen from the standard error table, *the smaller the estimate the higher is the relative standard error*. Very small estimates are thus subject to such high standard errors (relative to the size of the estimate) as to detract seriously from their value for most reasonable uses. In the tables in this publication, estimates less than the lowest levels shown in the standard error table have not been published. Although, in some cases, estimates for these small components can be derived by subtraction, they should not be regarded as reliable.

6. Proportions and percentages formed from the ratio of two estimates are also subject to sampling errors. The size of the error depends on the accuracy of both the numerator and the denominator. The formula for the relative standard error (RSE) of a proportion is given below:

$$RSE (x/y) = \sqrt{[RSE (x)]^2 + [RSE (y)]^2}$$

7. Considering the example from paragraph 4 above, the 3,420,400 persons in the labour force with post-school qualifications represent 75.6 per cent of the 4,527,300 persons in the total population who had post-school qualifications. The standard error for 4,527,300 is approximately 18,300 so the relative standard error is 0.4 per cent. The relative standard error for 3,420,400 is 0.5 per cent. Applying the above formula, the relative standard error of the proportion is $\sqrt{(0.5)^2 + (0.4)^2}$ or 0.3 per cent, giving a standard error for the proportion (75.6 per cent) of 0.2 percentage points. Therefore, there are about two chances in three that the proportion of persons with post-school qualifications is between 75.4 per cent and 75.8 per cent and nineteen chances in twenty the proportion is within the range 75.2 per cent to 76.0 per cent.

8. Published estimates may also be used to calculate the difference between two survey estimates (of numbers or percentages). Such an estimate is also subject to sampling error. The sampling error of the difference between two estimates depends on their standard errors and the relationship (correlation) between them. An approximate standard error (SE) of the difference between two estimates (x-y) may be calculated by the following formula:

$$SE (x-y) = \sqrt{[SE (x)]^2 + [SE (y)]^2}$$

While this formula will only be exact for differences between separate and uncorrelated characteristics or sub-populations, it is expected to provide a good approximation for all differences likely to be of interest in this publication.

9. The imprecision due to sampling variability, which is measured by the standard error, should not be confused with inaccuracies that may occur because of imperfections in reporting by interviewers and respondents and errors made in coding and processing data. Inaccuracies of this kind are referred to as the *non-sampling error*, and they may occur in any enumeration, whether it be a full count or a sample. Every effort is made to reduce the non-sampling error to a minimum by careful design of questionnaires, intensive training and supervision of interviewers and efficient operating procedures.

STANDARD ERRORS OF ESTIMATES

Size of estimate (persons)	N.S.W.	Vic.	Qld	S.A.	W.A.	Tas.	N.T.	A.C.T.	Australia	
									—number—	Relative standard error —per cent—
1,500						350				
1,800						380		410		
2,000						400	490	420		
2,500				580	620	440	540	460		
3,000				630	670	470	580	490		
3,500			860	680	720	500	610	520		
4,000			920	720	760	530	650	550		
4,500			970	760	800	560	680	570	1,050	23.9
5,000	1,200	1,250	1,000	790	840	580	710	590	1,150	22.7
6,000	1,350	1,350	1,100	860	900	630	760	630	1,250	20.7
7,000	1,450	1,450	1,200	910	970	670	810	670	1,350	19.2
10,000	1,700	1,700	1,400	1,150	1,100	770	920	750	1,600	16.0
20,000	2,300	2,250	1,900	1,400	1,500	990	1,200	940	2,250	11.1
50,000	3,350	3,300	2,700	1,950	2,100	1,350	1,650	1,200	3,400	6.8
100,000	4,450	4,300	3,550	2,500	2,700	1,650	2,100	1,450	4,550	4.6
200,000	5,900	5,500	4,550	3,150	3,400	2,050		1,700	6,100	3.0
300,000	6,800	6,300	5,200	3,600	3,850				7,100	2.4
500,000	8,300	7,500	6,100	4,200	4,500				8,700	1.7
1,000,000	10,600	9,300	7,600						11,200	1.1
2,000,000	13,400	11,400							14,200	0.7
5,000,000	18,000	14,600							19,100	0.4
10,000,000									23,500	0.2
12,000,000									24,700	0.2
15,000,000									26,300	0.2

Recommended retail price: \$7.50